



# **National Forest Monitoring System – Measuring, Reporting and Verification**

## **FINAL REPORT**

## ABBREVIATIONS

<b>AD</b>	Activity Data
<b>AJK</b>	Azad Jammu & Kashmir (Autonomous Territory)
<b>ASTER</b>	Advanced Spaceborne Thermal Emission and Reflection Radiometer
<b>BGB</b>	Belowground Biomass
<b>BGC</b>	Belowground Carbon
<b>BN</b>	Balochistan (province)
<b>CD</b>	Compact Disc
<b>CO<sub>2</sub></b>	Carbon Dioxide
<b>COP</b>	Conference of Parties
<b>CP</b>	Conference of Parties (Decision references)
<b>CSO</b>	Civil Society Organization
<b>CSV</b>	Comma-separated Values
<b>DB</b>	Database
<b>DBH</b>	Diameter at Breast Height
<b>DEM</b>	Digital Elevation Model
<b>DGPS</b>	Differential Global Positioning System
<b>DVD</b>	Digital Versatile Disc
<b>EF</b>	Emission Factor
<b>ESRI</b>	Environmental Systems Research Institute
<b>FAO</b>	Food and Agriculture Organization of the United Nations
<b>FAQ</b>	Frequently Asked Questions
<b>FATA</b>	Federally Administered Tribal Areas
<b>FBR</b>	Federal Board of Revenue
<b>FD</b>	Forest Department (provincial)
<b>FOSS</b>	Free and Open Source Software
<b>FPIC</b>	Free, Prior and Informed Consent
<b>FREL</b>	Forest Reference Emission Levels
<b>FRL</b>	Forest Reference Levels
<b>FSMP</b>	Forestry Sector Master Plan
<b>GB</b>	Gilgit-Baltistan (Autonomous Territory)
<b>GCISC</b>	Global Change Impact Studies Centre
<b>GCP</b>	Ground Control Point
<b>GDEM</b>	Global Digital Elevation Model
<b>GHG-I</b>	Greenhouse Gas Inventory
<b>GIS</b>	Geographic Information System

<b>GOP</b>	Government of Pakistan
<b>GPS</b>	Global Positioning System
<b>GUI</b>	Graphical User Interface
<b>ha</b>	Hectare (1 ha = 10,000 m <sup>2</sup> )
<b>HR</b>	High Resolution
<b>ICIMOD</b>	International Centre for Integrated Mountain Development
<b>ICT</b>	Islamabad Capital Territory (Federal Capital Territory)
<b>INGO</b>	International Non-Governmental Organization
<b>IPCC</b>	Intergovernmental Panel on Climate Change
<b>IT</b>	Information Technology
<b>IUCN</b>	International Union for Conservation of Nature
<b>km / km<sup>2</sup></b>	Kilometer / Square kilometer (1 km <sup>2</sup> = 1,000,000 m <sup>2</sup> )
<b>KP</b>	Khyber Pakhtunkhwa (province)
<b>LCCS</b>	FAO's Land Cover Classification System
<b>LiDAR</b>	Light Detection and Ranging
<b>LULC</b>	Land Use Land Cover
<b>LULUCF</b>	Land Use, Land Use Change and Forestry
<b>MBIGS</b>	Multiple Benefits, Impacts, Governance, Safeguards
<b>MMU</b>	Minimum Mapping Unit
<b>MOCC</b>	Ministry of Climate Change
<b>MOE</b>	Ministry of Environment
<b>MMRV</b>	Monitoring & Measurement, Reporting and Verification
<b>MRV</b>	Measurement, Reporting and Verification
<b>MSS</b>	Multispectral Scanner
<b>NASA</b>	National Aeronautics and Space Administration
<b>NCCA</b>	National Climate Change Authority
<b>NRP</b>	National REDD+ Program
<b>NFI</b>	National Forest Inventory
<b>NFMS</b>	National Forest Monitoring System
<b>NGO</b>	Non-governmental Organization
<b>NSC</b>	National REDD+ Steering Committee
<b>NSDI</b>	National Spatial Data Infrastructure
<b>NTFP</b>	Non-Timber Forest Product
<b>NUST</b>	National University of Sciences and Technology (NUST)
<b>OIGF</b>	Office of Inspector General of Forests
<b>OBIA</b>	Object Based Image Analysis

<b>OGC</b>	Open Geospatial Consortium
<b>OLI</b>	Operational Land Imager
<b>O&amp;M</b>	Operationalization and Maintenance
<b>PAMs</b>	REDD+ Policies and Measures
<b>PES</b>	Payment of Ecosystem Services
<b>PB</b>	Punjab (province)
<b>PFI</b>	Pakistan Forest Institute
<b>PSU</b>	Primary Sampling Unit
<b>QA</b>	Quality Assurance
<b>QC</b>	Quality Control
<b>QGIS</b>	Quantum GIS (Open Source GIS Software)
<b>REDD</b>	Reducing Emissions from Deforestation and Forest Degradation
<b>REDD+</b>	Reducing Emissions from Deforestation and forest Degradation and the role of conservation, sustainable management of forests and enhancement of forest carbon stocks in developing countries
<b>RF</b>	Removal Factor
<b>ROI</b>	Regions of Interest
<b>R-PP</b>	Readiness Preparation Proposal
<b>RS</b>	Remote Sensing
<b>R&amp;D</b>	Research & Development
<b>SAGA</b>	System for Automated Geoscientific Analysis
<b>SAR</b>	Synthetic Aperture Radar
<b>SCP</b>	Semi-Automatic Classification
<b>SD</b>	Sindh (province)
<b>SECP</b>	Securities & Exchange Commission of Pakistan
<b>SIS</b>	Safeguard Information System
<b>SLMS</b>	Satellite Land Monitoring System
<b>SOP</b>	Survey of Pakistan
<b>SPOT</b>	Satellite Pour l'Observation de la Terre (French satellite image provider)
<b>SSL</b>	Secure Sockets Layer
<b>SSU</b>	Secondary Sampling Unit
<b>SUPARCO</b>	Pakistan Space and Upper Atmosphere Research Commission
<b>SWIR</b>	Shortwave Infrared
<b>TIRS</b>	Thermal Infrared Sensor
<b>UNDP</b>	United Nations Development Programme
<b>UNEP</b>	United Nations Environment Programme
<b>UNFCCC</b>	The United Nations Framework Convention on Climate Change

<b>US</b>	The United States of America
<b>USGS</b>	US Geographical Survey
<b>UTM</b>	Universal Transverse Mercator (Coordinate System)
<b>VHR</b>	Very High Resolution
<b>VI</b>	Visual Interpretation
<b>VNIR</b>	Visible and Near-infrared
<b>VPN</b>	Virtual Private Network
<b>WCS</b>	The Open Geospatial Consortium Web Coverage Service Interface Standard
<b>WG</b>	Technical REDD+ Working Group
<b>WFS</b>	Web Feature Service
<b>WMS</b>	Web Map Service
<b>WWF</b>	World Wildlife Fund



## EXECUTIVE SUMMARY

A National Forest Monitoring System (NFMS) has two main functions: a 'monitoring' function and a 'Measuring, Reporting and Verification (MRV)' function. The "monitoring" function of the NFMS is primarily a domestic tool to allow countries to assess a broad range of forest information, including the REDD+ activities. The MRV function for REDD+, on the other hand, refers to the estimation and international reporting of national-scale forest emissions and removals. MRV has three main components, or 'pillars':

- 1) Satellite Land Monitoring System (SLMS),
- 2) National Forest Inventory (NFI), and
- 3) National Greenhouse Gas Inventory (GHG-I).

The SLMS and NFI pillars are used to provide inputs supporting the third pillar – the GHG inventory for the forest sector.

Under the NFMS, development parties need to develop progressively and operationalize these three pillars over the three phases of REDD+, and align them with the monitoring function. The three phases are i) readiness, ii) implementation, and iii) result-based payments. By the third phase of REDD+, Pakistan must have a fully functional NFMS-MRV system.



### The three phases of REDD+.

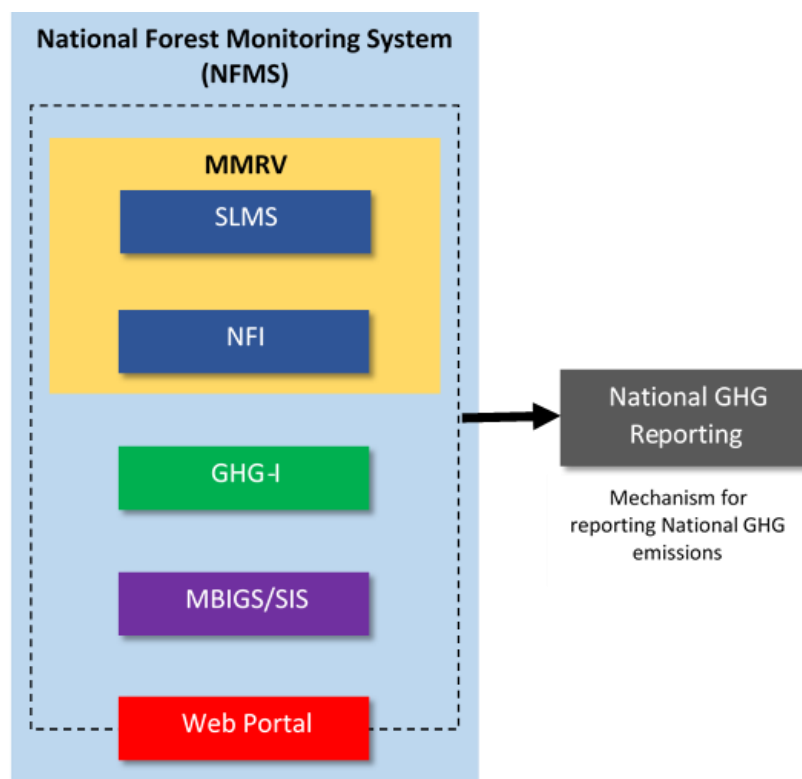
REDD+ Measuring, Reporting and Verification (MRV) forms a core function of the NFMS. It should provide data and information that are transparent, consistent over time, and are suitable for measuring, reporting and verifying anthropogenic forest-related emissions by sources and removals by sinks, forest carbon stocks and forest-area changes resulting from the implementation of the activities. The effectiveness of the REDD+ strategies and interventions can be measured and prioritized among the most significant emission sources reported and verified independently. NFMS systems, with MRV, are to be consistent with guidance on measuring, reporting and verifying nationally appropriate mitigation actions by developing country Parties agreed by the Conference of the Parties, taking into account methodological guidance in accordance with Decision 4/CP.15.

#### *National REDD+ organization and NFMS institutional roles*

The National Thematic Working Groups (WGs) serve as national platforms that engage stakeholders in scientific discussions, plan and organize research, collect data and serve as platforms for providing the National Steering Committee (NSC) with validated data and information to take decisions on REDD+. In early stages of REDD+ implementation, the WGs should be mandated to discuss about safeguard implementation, stakeholder engagement, NFMS, Forest Reference Emission Levels/Forest Reference Levels (FREL/FRL), Safeguards Information System (SIS), governance and management, REDD+ pilot projects, benefit sharing mechanisms and should evolve to incorporate any emerging issues.

NFMS for Pakistan is designed to integrate MRV functions of the SLMS and NFI along with GHG-I. The NFMS for Pakistan also includes information repository for MBIGS (multiple benefits, impacts, governance, safeguards) linked to safeguards information system (SIS) to incorporate local knowledge into national monitoring and provide participatory inputs to validate information. The system enables accounting the MBIGS matters defined as the minimum reporting contents and encapsulate participatory monitoring mechanisms as its basic

component to facilitate inputs from the local communities. A national forest carbon registry system serves as a tool to register REDD+ projects and track availability of the certified carbon credits.



The National Climate Change Authority (NCCA)<sup>1</sup> will be responsible to lead the design and coordinate technical implementation of the NFMS, including the SLMS, NFI, GHG-I components linked to carbon registry and MBIGS linked to SIS. The Provincial REDD+ Management Units are responsible for operational coordination in provinces. They coordinate through the Provincial Focal Points with NCCA when developing their provincial forest monitoring systems and draft provincial standards in conformity to the national standards. The Provincial REDD+ Management Committees, comprised of multi-stakeholders, take decisions and also approve budgets related to provincial REDD+ interventions.

Each involved institution is recommended to have clear roles and responsibilities, which are expected to evolve over time. The following table indicates the recommended responsible partner and co-learning institutions associated to each core NFMS function. The recommendations have been drawn after assessing the mandates, capacities and interests for the named institutions during the provincial consultations and Thematic Working Group meetings held between January 2017 and April 2018.

<sup>1</sup> The functions of the National REDD+ Office will be taken over the Pakistan Climate Change Authority established under Section 5 of the Climate Change Act, 2017.

## NFMS functions and institutional roles

Function	Responsible institution	Partner and co-learning institutions
Preparation, approval and national level monitoring of finances related to REDD+ interventions	Ministry of Climate Change National REDD+ Office (NCCA) National Steering Committee on REDD+	Provincial representatives for REDD+
NFMS/MRV Coordination	Ministry of Climate Change National REDD+ Office (NCCA) <sup>2</sup>	Provincial (or State) Forest Departments
NFI data production	Provincial (or State) Forest Departments	Pakistan Forest Institute
SLMS data production	Provincial (or State) Forest Departments	Pakistan Space and Upper Atmosphere Research Commission Pakistan Forest Institute
GHG-I (forest sector data)	Global Change Impact Studies Centre	National REDD+ Office (NCCA)
MBIGS	National REDD+ Office (NCCA)	Provincial REDD+ Management Units
Independent verification, QA/QC	National REDD+ office	Pakistan Space and Upper Atmosphere Research Commission, Pakistan Forest Institute, Survey of Pakistan, International and National Organizations
NFMS Database and Web Portal Hosting	Global Change Impact Studies Centre	Ministry of Climate Change
Data Ownership (primary data)	Provincial Governments	Provincial (or State) Forest Departments
Data Custodianship	Global Change Impact Studies Centre	Ministry of Climate Change
Training and capacity-building	Pakistan Space and Upper Atmosphere Research Commission (SLMS) Pakistan Forest Institute (NFI)	Institute of Space Technology, Universities, International and National Organizations
Methodology and System Development	REDD+ Thematic Working group	International and National Organizations <sup>3</sup>

<sup>2</sup> The functions of the NRO will be taken over by the Pakistan Climate Change Authority established under Section 5 of the Climate Change Act, 2017.

<sup>3</sup> The referred international and national organizations include WWF, IUCN, and ICIMOD among other international commercial or non-commercial entities.



### *Methodological Framework for Satellite Land Monitoring System (SLMS)*

The REDD+ Working Group members endorsed the definition of forest and it has been notified on September 14, 2017 as following:

*A minimum area of land of 0.5 ha with a tree crown cover of more than 10 % comprising trees with the potential to reach a minimum height of 2 meters. This will also include existing irrigated plantations as well as areas that have already been defined as forests in respective legal documents and expected to meet the required thresholds as defined in the national forest definition of Pakistan.*

A definition for the forest degradation was discussed in the REDD+ Thematic Working Group meeting and a recommendation has been formulated as following:

*Direct human-induced long-term loss persisting for 5 years or more of at least 5 % of forest carbon stock (and forest values) since reference year (2016) and not qualifying as deforestation.*

The Working Group also recommended to reassess the definition of degradation further in terms of availability of data, remote sensing and field measurement methodology to quantify proxies of forest variables to estimate carbon stock/forest values.

Harmonization of existing land-use categories classes by the provinces with the 6 Intergovernmental Panel on Climate Change (IPCC) main land use categories (forestland, cropland, grassland, settlement, wetland, other land) has been conducted. Forest stratification scheme based on climatic, main ecological and sub-ecological zones has been endorsed by the WGs.

Freely available optical satellite imagery and a desktop-based workflow have been recommended for implementing Forest Land Assessment as a part of SLMS. The process workflow has been designed and implemented for developing land use and land use change activity data for the reference years in scope of FREL/FRL development.

### *Methodological Framework for National Forest Inventory*

The NFI sampling scheme has been designed using a stratified two-phase sampling process with integration of the SLMS processes. The first phase sampling involved systematic layout of total 2954 plot locations visually interpreted for their land use and cover categories. Out of the total 128 forest classified forest locations, 95 locations have been included as primary sampling units (PSUs) in the second phase sampling. The second phase sampling units have been visited in field to measure above- and belowground carbon stock among other variables using the developed field measurement protocol as the reference. These plots are recommended to be remeasured as permanent sample plots with 3-year intervals to assess growth, regeneration and disturbance rates. The same systematic layout and methodology is recommended to be followed in Khyber Pakhtunkhwa (KP) and Gilgit Baltistan (GB), as well. The NFI reference grid is used to intensify sampling to have more accurate estimates for all the forest sub-types.

### *Methodological Framework for Greenhouse Gas Inventory*

SLMS and NFI provide all the relevant information for the national GHG-I for forestland remaining forest land, forestland converted to other land use or other land use converted to forestland. All Forest Land in Pakistan is considered as Managed Land. 2006 IPCC Guidelines for National Greenhouse Gas Inventories: Agriculture, Forestry and Other Land Use are to be applied as the methodological reference to ensure consistency with the FREL/FRL developed for 1996-2016. The activity data is sourced from SLMS and the emission and removal factors from NFI.

#### *Methodological Framework for Multiple Benefits, Impacts, Governance and Safeguards*

The MBIGS design has been integrated with the NFMS data model (and SIS) development processes with guidance from the REDD+ Thematic Working Groups. The defined indicators are to be collected by REDD+ intervention areas and provinces. At the beginning, there a REDD+ project baseline must be developed for each MBIGS variable.

#### *Methodological Framework for NFMS Web-portal and Data Repository*

The NFMS web application contains different server parts built on top of Free and Open Source Software (FOSS), open source map handling applications and libraries. The system architecture, components, user interface, information contents, user right management and data exchange operations have been designed and documented. The server is located, and data has been decided to be hosted at the Global Change Impact Studies Center (GCISC) in the 8<sup>th</sup> NSC meeting. The descriptions for data policy and sharing protocol with necessary templates are provided. The terms and conditions for using NFMS service has been defined.

#### *Operation and Institutionalization of NFMS*

Primary NFMS data ownership will be retained by the Provincial Governments. MOCC will be the custodian through GCISC (until a permanent NCCA is established in Mitigation Wing of the Pakistan Climate Change Authority, MOCC). Data Custodian will have technical role to ensure that deployed NFMS will have proper authorized data access. Furthermore, NCCA will coordinate ensuring data quality and update related issues in coordination with the Provincial REDD+ Units. The Provincial REDD+ Units are provided with the mandate to collect, manage and disseminate the NFMS data pertinent to their own provincial territories.

# TABLE OF CONTENTS

## ABBREVIATIONS

## EXECUTIVE SUMMARY

1.	INTRODUCTION	1
1.1.	REDD+ and National Forest Monitoring System	1
1.2.	National Forest Monitoring System in Pakistan	3
2.	METHODOLOGICAL FRAMEWORK AND DESIGN FOR NFMS-MRV	4
2.1.	Institutional Framework	4
2.1.1.	Guiding principles for the institutionalisation process	4
2.1.2.	National REDD+ organisation and NFMS institutional roles	5
2.2.	Monitoring Function of NFMS	7
2.3.	Development of NFMS for Pakistan	8
2.4.	Methodological Framework for Satellite Land Monitoring System (SLMS)	9
2.4.1.	Key Decisions of Definitions	11
2.4.2.	Harmonization of Existing Definitions	12
2.4.3.	Satellite Imagery Data for LULUC and Continuous Forest Monitoring	14
2.4.4.	Design of Desktop Based SLMS Workflow	18
2.5.	Methodological Framework for National Forest Inventory (NFI)	26
2.5.1.	NFI integration with SLMS	27
2.5.2.	Sample Design	29
2.5.3.	National Forest Inventory protocol and quality assurance	32
2.5.4.	Data Storage and Processing	34
2.6.	Methodological Framework of GHG-I	38
2.7.	Methodological Framework for MBIGS	39
2.8.	Methodological Framework for NFMS Web Portal and data repository	44
2.8.1.	System Architecture	45
2.8.2.	System Components	48
2.8.3.	User interface	51
2.8.4.	Information contents	51
2.8.5.	User management (permission)	52
2.8.6.	Uploading and updating interface	52
3.	OPERATION AND INSTITUTIONALIZATION OF NFMS	54
3.1.	Data Ownership, Custodianship and Sharing Agreement	54
3.2.	Data Policy and Sharing Protocol	56
3.3.	Terms and Conditions on using NFMS Web Portal	58
4.	NFMS FUNDING ARRANGEMENTS	60
4.1.	Satellite Land Monitoring Systems	60
4.2.	National Forest Inventory	61
4.3.	National GHG Inventory and reporting	62
4.4.	REDD+ Monitoring	62
4.5.	MBIGS/SIS	63
4.6.	NFMS Webportal	64
5.	References	65

6. Annexes	66
Annex 1 Decision Process for Definition of Forest	67
Annex 2 Sources of information for the drivers of deforestation and forest degradation events	70

## LIST OF TABLES

Table 1 NFMS functions and institutional roles.	6
Table 2 Development process for NFMS in Pakistan.	8
Table 3 Design process for SLMS in Pakistan	10
Table 4 National forest type stratification.	12
Table 5 Spectral characteristics of Landsat 8 OLI image.	15
Table 6 Systematic sample plots for different grid spacing.	21
Table 7 Population error matrix of four classes with cell entries ( $p_{ij}$ ).	25
Table 8 Canopy change analysis based on the visually interpreted plots for AJK. VHR imagery is not available from 1996.	26
Table 9 Design process for NFI in Pakistan	26
Table 10 Distribution of Phase I plots.	28
Table 11 Proportional Sample of Phase I plots (10") by land use.	28
Table 12 Proportions of land use in provinces based on Phase I sampling (in %)	29
Table 13 The Diameter-Height model descriptive statistics.	36
Table 14 The identified equations for the tree-level aboveground biomass / carbon stock calculation. D refers to diameter at breast height, H to height and $\rho$ to wood density.	37
Table 15 The applied IPCC root-shoot ratios adapted from Table 4.4 of the IPCC Good Practice Guidance (2006).	38
Table 16. Recommended MBIGS indicators to be collected by REDD+ intervention areas and provinces and labelled by sources.	41

## LIST OF FIGURES

Figure 1 The three phases of REDD+	1
Figure 2 Institutional framework for NFMS in scope of REDD+ in Pakistan.	5
Figure 3 Framework for the NFMS design for REDD+ in Pakistan	9
Figure 4 Landsat image scenes covering the territory of Pakistan	16
Figure 5 Workflow for desktop based SLMS for forest land and activity assessment.	19
Figure 6 Systematic grid of the first phase sample plots at 10' interval (about 16 km x 18 km).	20
Figure 7 Visual interpretation plot and sub-plots	21
Figure 8 Forest change in Plot#8073 in AJK (a) 2004 (b) 2008 (c) 2012 and (d) 2016.	22
Figure 9 CollectEarth Visual Interpretation interface used for interpretation of sample plots for Phase I sampling using Google Earth.	23
Figure 10 Phase I sample plots and land use categories.	28
Figure 11 Above-ground carbon density semi-variogram as a function of the distance between neighboring sample plots over the different climate zones.	30
Figure 12 Field plot design of nested circular fixed radius plot	31
Figure 13 Cluster design with Primary Sampling Unit (PSU) and four Secondary Sampling Units (SSU) in square formation.	31



Figure 14 Workflow of the National Forest Inventory process and integration with NFMS database .....	33
Figure 15 Screen capture of customized OpenForis Collect data entry tool.....	35
Figure 16 NFMS System Architecture. ....	46
Figure 17 NFMS data model.....	47
Figure 18 GeoNode high level architecture. ....	48
Figure 19 GeoNode Component architecture.....	49
Figure 20 NFMS web application interface.....	52
Figure 21 Spatial layer search and metadata interface .....	53
Figure 22 DGPS base station being established in one of the forest boundary pillars (Jhelum, PB). ....	158
Figure 23 DGPS rover station on top of an unmarked forest boundary in Manshera, KP ...	158
Figure 24 DGPS rover station being established in a forest boundary in pillar Manshera, KP. ....	159
Figure 25 Map of surveyed boundary of Jabwal Forest Compartment P-4, Chakwal Forest Division, Chakwal.....	162
Figure 26 Map of surveyed boundary of Warhal Forest Compartment 1, Chakwal Forest Division, Chakwal, PB.....	164
Figure 27 Map of surveyed boundary of Betalidher Forest Compartment 1, Sohawa Forest Division, Jhelum, PB .....	166
Figure 28 Map of surveyed boundary of Batrasi Forest Compartments 2(1) and 3(2), Siran Forest Division, Manshera, KP .....	169
Figure 29 Map of surveyed boundary of Kakku Forest Compartments 14 and 15, Agror Tanawal Forest Division, Manshera, KP .....	172
Figure 30 Map of surveyed boundary of Malakandi Forest Compartments 2(1), Kaghan Forest Division, Manshera, KP .....	174
Figure 31 Map of surveyed boundary of Khandheri Forest Compartments 8(1), Siran Forest Division, Manshera, KP-. ....	176

## List of Boxes

Box 1. UNFCCC COP decisions related to NFMS. ....	1
Box 2. National definition of Forest.....	12
Box 3. Harmonization of Other Land Use categories .....	13







# 1. INTRODUCTION

## 1.1. REDD+ and National Forest Monitoring System

A National Forest Monitoring System (NFMS) is one of the elements to be developed by the Parties implementing REDD+ activities as requested in paragraph 71(c) of UNFCCC COP Decision 1/CP.16. NFMS refers to methodological framework and institutional arrangements in a country to monitor forests in the context of REDD+ and in accordance with guidance from the Conference of the Parties (COP) of the United Nations Framework Convention on Climate Change (UNFCCC).

A NFMS system has two main functions: a 'monitoring' function and a 'Measuring, Reporting and Verification (MRV)' function. The "monitoring" function of the NFMS is primarily a domestic tool to allow countries to assess a broad range of forest information, including the REDD+ activities. The MRV function for REDD+, on the other hand, refers to the estimation and international reporting of national-scale forest emissions and removals. MRV has three main components, or 'pillars,' i.e. 1) the satellite land monitoring system (SLMS), 2) the national forest inventory (NFI), and 3) the national greenhouse gas inventory (GHG-I). The SLMS and NFI pillars are used to provide inputs supporting the third pillar – the GHG inventory for the forest sector.

Under the NFMS development process, Parties need to develop progressively and operationalize these three pillars over the three phases of REDD+, and align them with the monitoring function. The three phases are i) readiness, ii) implementation, and iii) result-based payments (Figure 1). By the third phase of REDD+, Pakistan must have a fully functional NFMS system in place



**Figure 1 The three phases of REDD+**

REDD+ MRV forms a core function of the NFMS. It should provide data and information that are transparent, consistent over time, and are suitable for measuring, reporting and verifying anthropogenic forest-related emissions by sources and removals by sinks, forest carbon stocks and forest-area changes resulting from the implementation of the activities. The effectiveness of the REDD+ strategies and interventions can be measured and prioritized among the most significant emission sources reported and verified independently. NFMS with MRV systems are to be consistent with guidance on measuring, reporting and verifying Nationally Appropriate Mitigation Actions (NAMAs) by developing country Parties agreed by the Conference of the Parties, taking into account methodological guidance in accordance with Decision 4/CP.15.

### Box 1. UNFCCC COP decisions related to NFMS.

**Decision 4/CP.15** (UNFCCC 2009) outlines methodological guidance for activities relating to reducing emissions from deforestation and forest degradation and the role of conservation, sustainable management of forests and enhancement of forest carbon stocks in developing countries. It requests developing country Parties:

- to identify drivers of deforestation and forest degradation resulting in emissions and also the means to address these;
- to identify activities within the country that result in reduced emissions and increased removals, and stabilization of forest carbon stocks;

- c. to use the most recent Intergovernmental Panel on Climate Change guidance and guidelines, as adopted or encouraged by the Conference of the Parties, as appropriate, as a basis for estimating anthropogenic forest-related greenhouse gas emissions by sources and removals by sinks, forest carbon stocks and forest area changes;
- d. to establish, according to national circumstances and capabilities, robust and transparent national (and sub-national) forest monitoring systems that
  - i. *use a combination of remote sensing and ground-based forest carbon inventory approaches for estimating, as appropriate, anthropogenic forest-related greenhouse gas emissions by sources and removals by sinks, forest carbon stocks and forest area changes;*
  - ii. *provide estimates that are transparent, consistent, as far as possible accurate, and that reduce uncertainties, taking into account national capabilities and capacities; and*
  - iii. *are transparent and their results are available and suitable for review as agreed by the Conference of the Parties.*

**Decision 1/CP.16 Paragraph 71 c** (UNFCCC 2010) recommends “a robust and transparent national forest monitoring system for the monitoring and reporting of REDD+ activities, with, if appropriate, subnational monitoring and reporting as an interim measure, in accordance with national circumstances, and with the provisions contained in Decision 4/CP.15, and with any further elaboration of those provisions agreed by the Conference of the Parties”.

**Decision 11/CP.19** defines the Modalities for National Forest Monitoring Systems (UNFCCC 2013):

Para 2. Decides that the development of Parties' national forest monitoring systems should take into account the guidance provided in decision 4/CP.15 and be guided by the most recent IPCC guidance and guidelines, as adopted or encouraged by the COP, as a basis for estimating anthropogenic forest-related greenhouse gas emissions by sources, and removals by sinks, forest carbon stocks, and forest carbon stock and forest-area changes;

Para 3. Also decides that robust national forest monitoring systems should provide data and information that are transparent, consistent over time, and are suitable for measuring, reporting and verifying anthropogenic forest-related emissions by sources and removals by sinks, forest carbon stocks, and forest carbon stock and forest-area changes resulting from the implementation of REDD+ activities referred to in decision 1/CP.16 Para 70, taking into account paragraph 71(b) and (c) consistent with guidance on measuring, reporting and verifying Nationally Appropriate Mitigation Actions (NAMAs) by developing country Parties agreed by the COP, taking into account methodological guidance in accordance with decision 4/CP.15;

Para 4. Further decides that national forest monitoring systems should:

- a. Build upon existing systems, as appropriate;
- b. Enable the assessment of different types of forest in the country, including natural forest, as defined by the Party;
- c. Be flexible and allow for improvement;
- d. Reflect, as appropriate, the phased approach as referred to in decision 1/CP.16, paragraphs 73 and 74.

## 1.2. National Forest Monitoring System in Pakistan

Pakistan Readiness Preparation Proposal (R-PP) has proposed NFMS as the central repository for all information pertaining to the National REDD+ Program, including both biophysical data on forest and forest land resources, emission and removal of greenhouse gases (GHG) as well as operational aspects related to the implementation of eligible activities (GOP 2013). R-PP has defined the roles of NFMS as:

- a) a national forest monitoring system for emissions and removals of greenhouse gases due to avoided deforestation and forest degradation, enhancement of forest carbon stocks, conservation and sustainable management of forests; and
- b) a system for providing information on how safeguards are being addressed and respected throughout the implementation of REDD+ activities

The objectives of NFMS are as following:

- To monitor forest resources of Pakistan for their sustainable management;
- To establish a national database and web portal for ensuring quality, transparency and accessibility of information related to forestry sector;
- To report to international conventions according to COP decisions and IPCC guidelines.

R-PP (GOP 2013) also recommends the purpose of NFMS as, to provide implementation support to enable all the required elements of Monitoring and Measurement, Reporting and Verification (M-MRV) defined by the COP. It also recommends requirement of additional functions that complement the implementation of the National REDD+ Program and other state functions associated with forest and forest land management including socio-economic development of the provinces. The R-PP (2013) also recommends the design criteria of NFMS to be based on guidance provided by the UNFCCC and IPCC and other sources of information.

The R-PP (2013) describes the three phased approach for the design and development of NFMS:

- Phase 1 Design, piloting and capacity building
- Phase 2 NFMS implementation, enhancement and capacity building
- Phase 3 Full operation of the NFMS with performance-based carbon assessment.

Pakistan has prepared a NFMS action plan (Jehangir et al. 2015) with an objective to describe activities to be undertaken to develop a robust and transparent NFMS. The action plan details a comprehensive road map for the development, establishment and institutionalization of the NFMS in the country.



## 2. METHODOLOGICAL FRAMEWORK AND DESIGN FOR NFMS-MRV

### 2.1. Institutional Framework

#### 2.1.1. Guiding principles for the institutionalization process

The NFMS institutionalization involves defining institutions and their mandates, developing and formalizing processes and methodologies in the context of the national and sub-national NFMS activities:

**Institutions:** Defining which institutions are involved in national and sub-national NFMS activities and what their respective roles and responsibilities are and how they should interact, how to intervene in case of challenges and who bears overall responsibility

**Processes:** Defining the overall process of collecting, processing, reporting and verifying data. This includes determining which role individual institutions play within this process.

**Methodologies and tools:** Identifying and developing standardized methodologies and tools required to collect, process and store data. The methodologies and tools are needed for NFI, SLMS, MBIGS monitoring and GHG-I.

Additionally, the resulting institutional arrangements should comply with the following criteria:

- a) A solid, sustainable network of institutions with the required variety of expertise;
- b) Clearly documented roles and responsibilities with a single body assigned for overall coordination;
- c) Good coordination and clear lines of communication;
- d) Continuity of staff and succession planning;
- e) High level of ownership by the participating stakeholders; and
- f) Efficient use of existing institutions and frameworks to minimize establishment and operational costs.

The institutional arrangements should establish frameworks for:

- a) Formalizing mandates for data acquisition, processing and sharing amongst relevant institutions to avoid duplication of efforts;
- b) Maintaining documented processes for quality assurance and quality control, so as to ensure the quality datasets (e.g. for spatial data and carbon pool measurements);
- c) Continuous improvement including documentation of opportunities for improvement and process for the inclusion of such improvements;
- d) Retaining skilled staff through appropriate and ongoing training and environments to encourage staff retention;
- e) Securing adequate budgets to support the initial development of the MRV function as well as the ongoing operation and development.

In general terms, the main NFMS institutional roles can be classified as following:

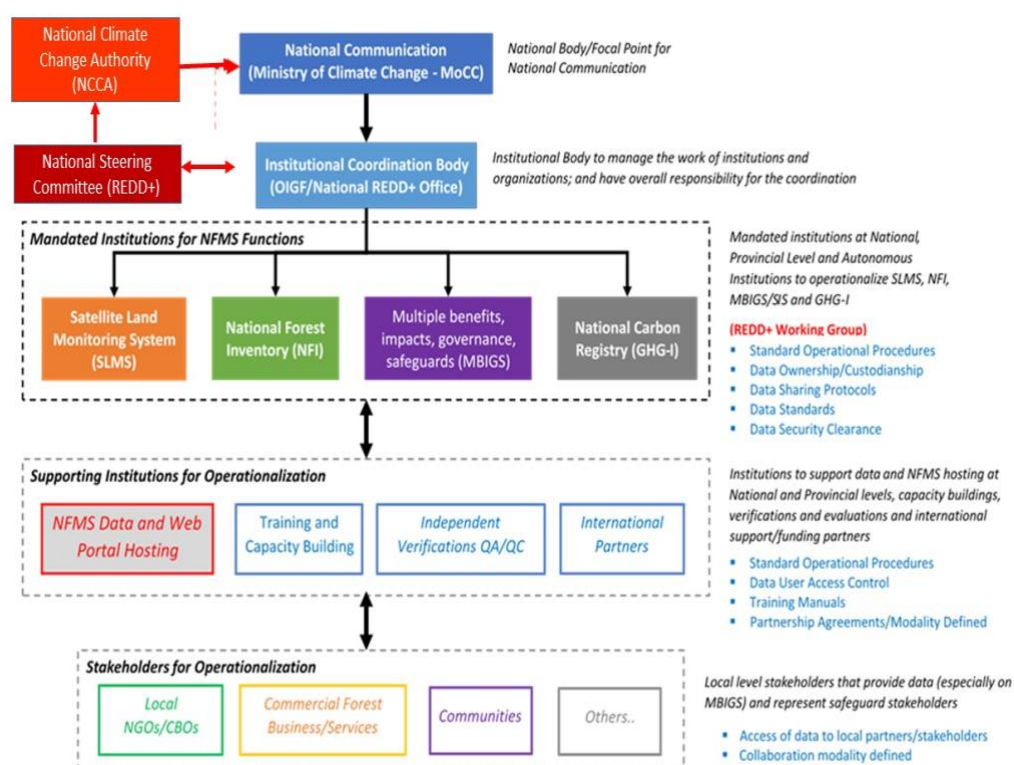
- a) National Focal Point with the overall responsibility for
  - coordinating the REDD+ MRV function and
  - liaising with the UNFCCC (Decision 10/CP.19);
- b) National Institutional Body
  - to manage the work of institutions and organizations;
  - to have the overall responsibility for the coordination of administrative and technical arrangements; and
  - to ensure the overall quality of reported estimates and standardization of processes and tools
- c) Mandated Institutions (national and sub-national) to perform specific tasks and provide data.



### 2.1.2. National REDD+ organization and NFMS institutional roles

The National Thematic Working Groups (WGs) serve as national platforms that engage stakeholders in scientific discussions, plan and organize research, collect data and serve as platform for providing the National Steering Committee (NSC) to take decisions on REDD+ with validated data and information (Figure 2). In early stages of REDD+ implementation, the WGs should be mandated to discuss about safeguard implementation, stakeholder engagement, NFMS, FREL/FRL, SIS, governance and management, REDD+ pilot projects, benefit sharing mechanisms and should evolve to incorporate any emerging issues.

The National Climate Change Authority (NCCA)<sup>4</sup> will be responsible to lead the design and coordinate technical implementation of the NFMS, including the SLMS, NFI, GHG-I components linked to carbon registry and MBIGS linked to SIS. The Provincial REDD+ Management Units are responsible for operational coordination in provinces. They coordinate through the Provincial Focal Points with NCCA when developing their provincial forest monitoring systems and draft provincial standards in conformity to the national standards. The Provincial REDD+ Management Committees comprised of multi-stakeholders take decisions and also approve budgets related to provincial REDD+ interventions.



**Figure 2 Institutional framework for NFMS in scope of REDD+ in Pakistan.**

Each involved institution is recommended to have clear roles and responsibilities, which are expected to evolve over time. Table 1 indicates the recommended responsible partner and co-learning institutions associated to each core NFMS function. The recommendations have been drawn after assessing the mandates, capacities and interests of the named institutions during the provincial consultations and Thematic Working group meetings held between January 2017 and April 2018.

<sup>4</sup> The functions of the National REDD+ Office (NRO) will be taken over by the Pakistan Climate Change Authority established under Section 5 of the Climate Change Act, 2017.

**Table 1 NFMS functions and institutional roles.**

Function	Responsible institution	Partner and co-learning institutions
Preparation, approval and national level monitoring of finances related to REDD+ interventions	Ministry of Climate Change National REDD+ Office (NCCA) National Steering Committee on REDD+	Provincial representatives for REDD+
NFMS/MRV Coordination	Ministry of Climate Change National REDD+ Office (NCCA) <sup>5</sup>	Provincial (or State) Forest Departments
NFI data production	Provincial (or State) Forest Departments	Pakistan Forest Institute
SLMS data production	Provincial (or State) Forest Departments	Pakistan Space and Upper Atmosphere Research Commission Pakistan Forest Institute
GHG-I (forest sector data)	Global Change Impact Studies Centre	National REDD+ Office (NCCA)
MBIGS	National REDD+ Office (NCCA)	Provincial REDD+ Management Units
Independent verification, QA/QC	National REDD+ office	PFI, SUPARCO, SOP, International and National Organizations
NFMS Database and Web Portal Hosting	Global Change Impact Studies Centre	Ministry of Climate Change
Data Ownership (primary data)	Provincial Governments	Provincial (or State) Forest Departments
Data Custodianship	Global Change Impact Studies Centre	Ministry of Climate Change
Training and capacity-building	Pakistan Space and Upper Atmosphere Research Commission (SLMS) Pakistan Forest Institute (NFI)	Institute of Space Technology, universities, international and national organizations
Methodology and System Development	REDD+ Thematic Working group	International and national organizations <sup>6</sup>

A core feature of MBIGS/SIS monitoring function is to enable incorporation of local knowledge into national monitoring and provide inputs to validate information in a participatory way. The MBIGS/SIS institutional framework defines the bottom-up inclusive arrangements to collect, compile, aggregate, analyse, validate and disseminate information. The draft Framework for Design of a Safeguard Information System in Pakistan (Climate Law and Policy/Hagler Bailly Pakistan, 2018a) suggests that the collection of data is to be carried out by the provincial REDD+

<sup>5</sup> The functions of the NRO will be taken over by the Pakistan Climate Change Authority established under Section 5 of the Climate Change Act, 2017.

<sup>6</sup> The referred international and national organizations include WWF, IUCN, and ICIMOD among other international commercial or non-commercial entities.

management units. These units are expected to provide periodical evaluation reports concerning the implementation of REDD+ activities at the provincial levels.

The compilation of information from the different relevant systems and sources on how the safeguards are being 'respected' has been recommended to be carried out by NCCA based on the reporting template provided for the provincial REDD+ management units. Further, it has been recommended that the NCCA through its SIS specialist lead the analysis of the quality-controlled information provided by all Provincial REDD+ Management Units with a view to determining to what extent the safeguards are being addressed and respected at national level. The draft framework envisions the involvement of third parties (e.g. NGO, CSO, academic institutions) in the quality control processes.

SIS information will be published on the specific REDD+ Safeguards website every two years and incorporated in the national communications to UNFCCC.

## **2.2. Monitoring Function of NFMS**

The key goal of the NFMS monitoring function is to generate reliable information to (i) support formulating, monitoring and adjusting policies related to forest and forest landscapes, (ii) inform interested stakeholders about the status of forests, and (iii) report to international conventions and processes on a regular basis. NFMS includes the collection, assessment, evaluation, interpretation and reporting of data, the derivation of information as well as the monitoring of their changes and trends over time.

Monitoring sustainability of forest management and forest policies is a core objective of the NFMS monitoring function. In that sense, the criteria of sustainable forest management define the framework for national forest monitoring of Pakistan, and the indicators of sustainable forest management define the core set of attributes to be surveyed, assessed and monitored in national forest monitoring. In this context of sustainable forest management, the NFMS of Pakistan considers both the biophysical dimension of forests and the dimension of economy and society.

As a domestic tool, NFMS can support monitoring a vast range of forest-related indicators. Such indicators fall beyond the monitoring of forest carbon stocks, including other parameters such as forest uses, Non-Timber Forest Products (NTFPs), forest health, biological diversity, productive, protective and socio-economic functions of forests, implementation of legal and policy frameworks, forest governance, among others. The indicators are likely to evolve over time according to the changed monitoring needs. Monitoring is the core function of the NFMS and it largely builds on the other components such as SLMS and NFI (See sections 2.4 and 2.5).

In scope of REDD+, the NFMS supports monitoring the performance of REDD+ demonstration activities during Phase 2 and national REDD+ Policies and Measures (PAMs) during Phase 3. The monitoring function helps to monitor with drivers of deforestation and forest degradation. In scope of the MRV system it is also necessary to discover evidence that can be linked to the direct and underlying causes altering the state of forests by accelerating or halting deforestation, forest degradation as well as afforestation and reforestation processes. Forest sector logging, transportation, export and planting records are useful to support accounting for the carbon emission removals due to sustainable management of forests (selective logging) and carbon stock enhancement (forest restoration through afforestation or reforestation).



## 2.3. Development of NFMS for Pakistan

Stepwise methodological approach was followed in designing, piloting and implementing the framework for NFMS in Pakistan. The methodological approaches included the steps/stages in Table 2.

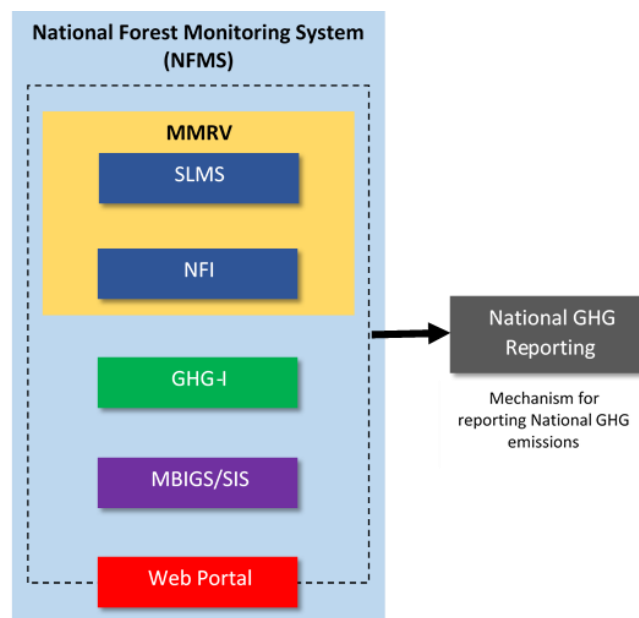
**Table 2 Development process for NFMS in Pakistan**

Stages	Design and Development Process	Timeline
Stage 1	<ul style="list-style-type: none"> <li>Review of existing national and provincial system for forest monitoring</li> <li>Review of National Capacity and Needs Assessment (Hussain et al. 2016).</li> <li>Review of Action Plan for the Implementation of the NFMS of Pakistan (Jehangir et al. 2015)</li> </ul>	February 2017
Stage 2	<ul style="list-style-type: none"> <li>Stakeholders' discussion on National Circumstances and Forest Monitoring</li> <li>Stakeholders' discussion on Land Cover, Activities and Forest Definition</li> </ul>	Inception Workshop 13-14 February 2017
Stage 3	<ul style="list-style-type: none"> <li>Key stakeholder consultation meetings at MOCC National REDD+ Office, Provincial FDs, PFI and other stakeholders</li> <li>Key Informant Interviews - Checklists on National Forest Inventory (NFI)</li> <li>Key Informant Interviews - Checklists on Satellite Land Monitoring System (SLMS)</li> <li>Key Informant Interviews - Checklists on Green House Gas inventories (GHG-I)</li> </ul>	Visits to Provincial FDs, national and provincial stakeholders, academic institutions, other stakeholders  March-June 2017
Stage 4	<ul style="list-style-type: none"> <li>Assessment of existing system being implemented at provincial level (KP and GB) and by supporting institutions (PFI)</li> <li>Assessment of international best practices</li> <li>Assessment of FREL/FRL submission document by REDD+ countries</li> </ul>	July-August 2017
Stage 5	<ul style="list-style-type: none"> <li>Framework design for SLMS and NFI</li> <li>Presentation and REDD+ Working Group Technical Meeting for Stakeholders' input for NFMS Design and Methodology on NFMS data needs and Institutional Framework</li> <li>Discussions amongst the key stakeholder groups</li> <li>Development and testing of processes for SLMS and NFI</li> <li>Development of capacity building/training contents for SLMS and NFI</li> <li>Training to REDD+ national and provincial stakeholders</li> <li>Feedback and inputs from the participating stakeholders on SLMS and NFI design</li> </ul>	August-November 2017
Stage 6	<ul style="list-style-type: none"> <li>Piloting of NFI Key informants' consultation for Users' Requirement Assessment for NFMS</li> <li>Design and development of NFMS</li> <li>Development user's documentation/ protocol/manual</li> </ul>	October-December 2017
Stage 7	<ul style="list-style-type: none"> <li>NFMS Web portal development</li> </ul>	January-March 2018

	<ul style="list-style-type: none"> <li>▪ Piloting of SLMS</li> <li>▪ Institutional framework consultations and endorsement</li> <li>▪ Consultations for the primary and secondary information sources for deforestation and forest degradation</li> </ul>	
Stage 8	<ul style="list-style-type: none"> <li>▪ User's Acceptance Test for NFMS</li> <li>▪ Decision for hosting of NFMS</li> </ul>	April-May 2018
Stage 9	<ul style="list-style-type: none"> <li>▪ National Capacity Building Workshop for NFMS</li> <li>▪ Web portal– GHG-I</li> <li>▪ Operationalization of NFMS</li> <li>▪ Development of Data Sharing Protocol</li> <li>▪ Installation and administrative training at the system host</li> </ul>	June-September 2018

The NFMS for Pakistan is designed to integrate MRV functions of the SLMS and NFI along with GHG-I. The NFMS for Pakistan also includes information repository for MBIGS linked to safeguards information system (SIS) to incorporate local knowledge into national monitoring and provide participatory inputs to validate information. The system enables accounting the MBIGS matters defined as the minimum reporting contents and encapsulate participatory monitoring mechanisms as its basic component to facilitate inputs from the local communities. A national forest carbon registry system serves as a tool to register REDD+ projects and tracking availability of the certified carbon credits.

**Figure 3 Framework for the NFMS design for REDD+ in Pakistan**



## 2.4. Methodological Framework for Satellite Land Monitoring System (SLMS)

Satellite Land Monitoring System (SLMS) is aimed to collect and assess Activity Data (AD), i.e. continuous data on land use and forest area change resulting from human activities. SLMS will contribute information for the REDD+ monitoring function, as well as extends the analysis of



land use land use change to the national level through wall-to-wall mapping to establish FREL/FRL. Table 3 summarises the process followed to design, implement and operationalize SLMS in Pakistan.

SLMS has been designed to track land use and cover changes. It also supports the driver and causes analysis to design REDD+ actions and monitor their effectiveness. The provincial and territorial forest departments have their field staffs to record and verify the deforestation or degradation events in the field and the information is to be stored in the NFMS data repository. A forest guard or other community member informs the concerned forest officers about illegal forest actions. In many cases the detailed information about drivers and causes may come to the forest departments through the relevant sectoral agencies or communities. In case of the development activities the concerned sectoral department or agency approaches forest department for no-objection clearance. The potential sources of such information have been identified in the WGs meeting and they are associated with each driver in Annex 2. Besides the social and electronic media may serve as an additional source regarding to the deforestation and forest degradation events.

**Table 3 Design process for SLMS in Pakistan**

Steps	Process	Outcome/Design Decisions
Step 1	<ul style="list-style-type: none"> <li>Definition of reference monitoring periods for FREL/FRL</li> </ul>	<ul style="list-style-type: none"> <li>1996, 2000, 2004, 2008, 2012 and 2016 and later at 4 years interval</li> </ul>
Step 2	<ul style="list-style-type: none"> <li>National Definition of Forest and its endorsement</li> <li>Determining harmonized Land Use Categories</li> <li>Determining harmonized sub-classes for forest (forest types)</li> <li>Determination of Minimum Mapping Unit (MMU)</li> <li>Defining definition of 'Degradation'</li> </ul>	<ul style="list-style-type: none"> <li>Forest Definition Notified</li> <li>IPCC land use classes</li> <li>Minimum mapping unit (0.36 hectares equalling to 2 x 2 pixels in Landsat imagery)</li> </ul>
Step 3	<ul style="list-style-type: none"> <li>Compilation of existing RS data</li> <li>Identification of data gaps</li> </ul>	<ul style="list-style-type: none"> <li>Mid-resolution Landsat imagery (cloud free)</li> <li>Use of +/- 2 years normalize years for data gaps</li> <li>Use of available secondary imageries e.g. Spot 5, Sentinel 2 and others</li> </ul>
Step 4	<ul style="list-style-type: none"> <li>Defining accuracy targets and QA/QC protocols for RS interpretation and analysis</li> </ul>	<ul style="list-style-type: none"> <li>&gt;80% overall and class wise producers' accuracies with area estimation at 95% confidence interval</li> </ul>
Step 5	<ul style="list-style-type: none"> <li>Determining LULUC categories (LU conversion)</li> </ul>	Forest remaining as Forest <ul style="list-style-type: none"> <li>Cropland, Grassland, Wetland, Settlement, Other Land converted to Forest</li> <li>Forest converted to Cropland, Grassland, Wetland, Settlement, Other Land</li> <li>Cropland, Grassland, Wetland, Settlement, Other Land remaining as the same classes</li> </ul>

		<ul style="list-style-type: none"> <li>▪ Cropland, Grassland, Wetland, Settlement, Other Land converted to others</li> </ul>
Step 6	<ul style="list-style-type: none"> <li>▪ Designing stratified sampling technique for RS classification and areas estimation</li> <li>▪ Developing method for stratification of samples (visual interpretation) and QA/QC of visual interpretation method</li> <li>▪ Developing protocol for visual interpretation</li> </ul>	<ul style="list-style-type: none"> <li>▪ 10'x10' systematic grids throughout the country               <ul style="list-style-type: none"> <li>▪ Densified at 5'x5' and 2.5'x2.5', 1.25'x1.25' and 0.625'x0.625' at provincial levels as necessary to attain defined accuracy targets</li> <li>▪ Open Foris Collect Earth GUI developed for visual interpretation</li> <li>▪ Visual interpretation protocol document</li> </ul> </li> </ul>
Step 7	<ul style="list-style-type: none"> <li>▪ Designing and piloting RS processing method (desktop based and/or cloud based)</li> <li>▪ Developing protocol and methodology document for RS processing and analysis for LULUC for reference years</li> <li>▪ Developing methodology for mapping and estimating forest degradation</li> <li>▪ Developing methodology for mapping forest types</li> <li>▪ Developing methodology for estimating aboveground woody biomass and other forest parameters</li> <li>▪ Integration of NFI field data for mapping and modelling, validation and accuracy assessment</li> </ul>	<ul style="list-style-type: none"> <li>▪ Free and Open Source Software (FOSS) platform using QGIS, Orfeo Toolbox and limited Python/R Programming               <ul style="list-style-type: none"> <li>▪ Non-parametric regression models such as Random Forests for land use mapping, kNN forest biomass estimation,</li> <li>▪ Pixel based analysis for land use change using Multivariate Alteration Detection and other algorithms</li> <li>▪ NFI (harvest/disturbance) data and complementary visual canopy analysis on VHR imagery for degradation assessment</li> </ul> </li> </ul>
Step 8	<ul style="list-style-type: none"> <li>▪ Development of institutional capacity building framework for institutionalization of SLMS</li> <li>▪ Development of training curricula and materials for human resources development</li> <li>▪ Development of operationalization and maintenance (O&amp;M) guideline</li> </ul>	<ul style="list-style-type: none"> <li>▪ Recommendations for Institutionalization of SLMS               <ul style="list-style-type: none"> <li>▪ Training curricula and materials</li> <li>▪ Operational and Maintenance protocol</li> </ul> </li> </ul>

#### 2.4.1. Key Decisions of Definitions<sup>7</sup>

A key decision was made on the 'National Definition of the Forest', 'Forest stratification' and 'Other Land Use Classes' and their harmonization with existing definitions used in the country/provinces. The forest definition was endorsed by all the provincial representatives and was agreed upon to be officially notified as the National Forest Definition. The Thematic Working Groups were also consulted for the definitions for forest degradation and some recommendations were provided.

<sup>7</sup> Refer Annex 1 for the process adopted for the national definition of Forest

## Box 2. National definition of Forest

The REDD+ Working Group members endorsed the above definition of forest as:

“A minimum area of land of 0.5 ha with a tree crown cover of more than 10 % comprising trees with the potential to reach a minimum height of 2 meters. This will also include existing irrigated plantations as well as areas that have already been defined as forests in respective legal documents and expected to meet the required thresholds as defined in the national forest definition of Pakistan.”

*[Notification attached in Annex 1]*

The national forest definition thresholds have been defined in compliance with the Marrakesh Accords (UNFCCC COP 7, IPCC 2003b). The national forest stratification has been harmonised, consulted and endorsed by the REDD+ Thematic Working groups (Table 4).

**Table 4 National forest type stratification**

Forest Stratification			
Climate Zone	Ecological Zone		Density Classes
	Main Ecological Zone	Sub-Ecological Zone	
1. Tropical	1.1 Littoral and swamp forest	1.1.1 Mangroves	Dense or Sparse
	1.2 Tropical dry deciduous		
	1.3 Tropical thorn forest		
	1.4 Riverain forests		
2. Sub-Tropical	2.1 Sub-tropical broad-leaved evergreen forests	2.1.1 Montane sub-tropical scrub Forests	
		2.1.2 Sub-tropical broad-leaved forests	
	2.2 Sub-tropical pine forests		
3. Temperate	3.1 Moist Temperate Forests		
	3.2 Dry Temperate Forests	3.2.1 Montane Dry Temperate Coniferous Forests	
		3.2.2 Dry temperate Juniper and Chilghoza Forests	
		3.2.3 Dry Temperate Broad-leaved Forests	
		3.2.4 Northern Dry Scrub	
4. Alpine	4.1 Sub-Alpine Forests		
	4.2 Alpine Scrub		
5. Plantation	5.1 Linear Plantations	5.1.1 Road side plantations	
		5.1.2 Railway side plantations	
		5.1.3 Canal side plantations	
	5.2 Irrigated Plantations		

### 2.4.2. Harmonization of Existing Definitions

The REDD+ WG meeting discussed the harmonization of existing land-use categories and classes used by the provinces and recommended them to be adopted for the development of national FREL/FRL. Land Use/Land Cover categories recommended by the provincial Forest Departments (FDs) are consistent and are adopted for developing land use change of reference years for activity data.



For other land use categories, IPCC's broader land category is considered with following definitions:

**Box 3. Harmonization of Other Land Use categories**

Other Land Use Categories	Definitions/Descriptions
Cropland	This category includes arable and tillage land, and agro-forestry systems where vegetation falls below the thresholds used for the Forest Land category, consistent with the selection of national definitions.
Grassland	This category includes rangelands and pastureland that is not considered as Cropland. It also includes systems with vegetation that fall below the threshold used in the Forest Land category and which are not expected to exceed, without human intervention, the threshold used in the Forest Land category. The category also includes all Grassland from wild lands to recreational areas as well as agricultural and silvo-pastoral systems, subdivided into managed and unmanaged consistent with national definitions.
Wetlands	This category includes land that is covered or saturated by water for all or part of the year (e.g., peatland) and that does not fall into the Forest Land, Cropland, Grassland or Settlements categories. The category can be subdivided as "managed" and "unmanaged" according to national definitions. It includes reservoirs as managed sub-division and natural rivers and lakes as unmanaged sub-divisions.
Settlements	This category includes all developed land, including transportation infrastructure and human settlements of any size, unless they are already included under other categories. This should be consistent with the selection of national definitions.
Other land	This category includes bare soil, rock, ice, and all unmanaged land areas that do not fall into any of the other five categories. It allows the total of identified land areas to match the national area, where data is available.

Deforestation is defined as the direct human induced conversion of forest to non-forest (UNFCCC) or the permanent reduction of the tree canopy cover below the minimum 10% threshold (FAO, 2015). In scope of Pakistan's first FREL submission, deforestation assessment has been based on changes in natural forests and exclude irrigated plantations, though the notified forest definition includes irrigated plantations as one of the forest types. A minimum mapping unit of 0.5 ha has been applied for the deforestation mapping. This means that less than 0.5 ha forest loss is not classified as deforestation.

FREL/FRL based on the land use and cover reporting is planned to be updated every 4 years in Pakistan. As the mapping process relies on the analysis of available satellite imagery, some changes may be observed to be only temporal. In practical terms, it means that a permanent land use and cover change could be declared when the forest has not been restored by the end of the following 4-year monitoring period. For example, if forest conversion to other land use

has been observed during the period 2008-2012, it can be considered as deforestation when no forest class is observed for the same area in 2016 maps.

In the context of greenhouse gas inventories, forest degradation refers the human-induced long-term reduction in carbon stocks such that the forest cover, height, and area are not reduced sufficiently to reclassify the land as non-forest under the definition accepted in the Marrakesh Accords (IPCC 2003b). A definition for forest degradation was discussed in the REDD+ Thematic Working Group meeting and a recommendation was formulated as following:

*Direct human-induced long-term loss persisting for 5 years or more of at least 5 % of forest carbon stock (and forest values) since reference year (2016) and not qualifying as deforestation.*

The Working Group also recommended to assess the definition of degradation in terms of availability of data, remote sensing and in-situ methodology to quantify proxy(ies) of forest variables to estimate on carbon stock and other forest variables. To be able to detect the relatively small carbon stock changes, intensive field campaigns or canopy modelling with optical VHR reference data or LiDAR, when using canopy cover as a proxy variable, are needed. In scope of forest inventories, degradation can be observed when carbon stock variables are re-measured with regular intervals from the same inventory plots. Forest inventory plot data allows estimating carbon stocks for an area of interest and detecting changes for the period with multi-temporal observations. Forest degradation can be estimated as the balance between forest growth, wood harvests and other losses based on the forest inventory and harvest data. The latter method is demonstrated by calculating the emission/removal factors for the FREL/FRL development using pilot NFI and secondary source data for modelling.

#### 2.4.3. *Satellite Imagery Data for LULUC and Continuous Forest Monitoring*

The territory of Pakistan is covered by 55 Landsat image scenes with free access to its archive data<sup>8</sup>. From 1996 until 2012 Landsat 5 TM and from the reference year 2016 onwards Landsat 8 OLI are available for SLMS. Even through Landsat satellites are imaging the Earth high temporal resolution, the images with a maximum of +/- 2-year deviation to the reference year need to be considered for having wall to wall coverage with minimal coverage of the clouds over the country. The images are acquired for the post-monsoon season months between September-November. As it applies to any other optical images, they are limited to observe only the top of the canopies and only allow assessing canopy cover changes. Stereo-photogrammetry analysis using VHR optical imagery (e.g. SPOT) can allow monitoring changes in terms of canopy cover and height, but it is a costly solution for regular monitoring. Regarding the radiometric image properties and pre-processing needs Landsat provides an advantage as one scene covers much larger land area and needs smaller storage space than VHR/HR image scenes. The optical images are sensitive to constantly changing light reflectance conditions in the area of interest even within a single day and between the multiple observation days. Radar data can provide indication for canopy changes but requires high technical skills and is sensitive to the changing conditions (e.g. moisture). Airborne LiDAR is accurate but a costly data source for regular monitoring purposes. The optical Sentinel-2<sup>9</sup> is becoming available more broadly for SLMS and allows decreasing the Minimum Mapping Unit (MMU) from 0.36 ha (2\*2 pixels of 30 m resolution) to 0.04 ha (2\*2 pixels of 10 m resolution) due to its 10 m spatial resolution. It is expected to be a competitive alternative to Landsat images in scope of SLMS, even though the larger image sizes require more storage and more powerful processing capacity.

Landsat 5 Thematic Mapper (L5 TM) consists of six spectral bands with spatial resolution of 30 m for Bands 1-5 and 7. Thermal Band 6 is acquired at 120 m resolution and is resampled to 30 m resolution. Each L5 TM scene is approximately 170 km north-south by 183 km east-west swath width. L5 TM has been decommissioned in 2013, therefore do not have significant usage for future forest monitoring in the national scale. Though these imageries were used to develop nation FREL/FRL under the REDD+ in Pakistan and could be used as historic references.

<sup>8</sup> USGS Glovis (<https://glovis.usgs.gov/next/#>), EarthExplorer (<https://earthexplorer.usgs.gov/>), USGS Landsat Look (<https://landsatlook.usgs.gov/viewer.html>)

<sup>9</sup> <https://sentinel.esa.int/web/sentinel/missions/sentinel-2>



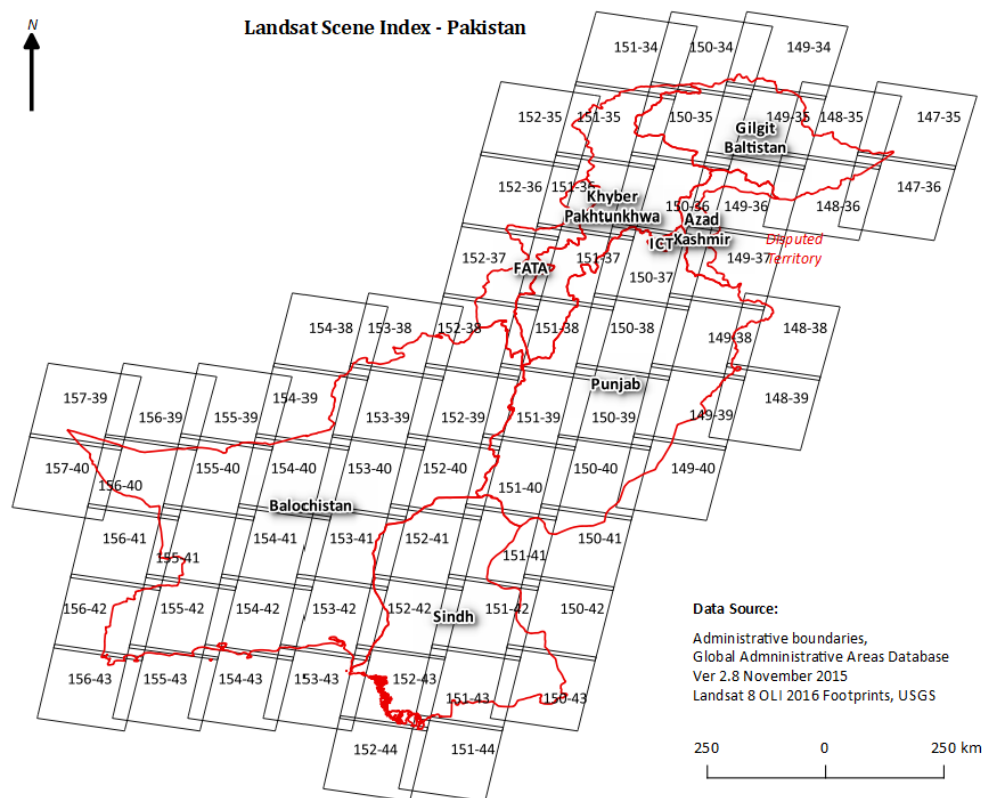
Landsat 8 Operational Land Imager (OLI) and Thermal Infrared Sensor (TIRS) (L8 OLI & TIRS) launched jointly by the NASA and USGS entered service in 2013. Landsat 8 OLI/TIRS images consist of nine spectral bands with a spatial resolution of 30 m for Bands 1 to 7 and 9 (

Table 5). The ultra-blue Band 1 is useful for coastal and aerosol studies. Band 9 is useful for cirrus cloud detection. The resolution for Band 8 (panchromatic) is 15 m. Thermal bands 10 and 11 are useful in providing more accurate surface temperatures and are collected at 100 meters. The approximate scene size is 180 km north-south by 185 km east-west.

**Table 5 Spectral characteristics of Landsat 8 OLI image<sup>10</sup>**

Bands	Wavelength (micrometers)	Resolution (meters)
Band 1 - Ultra Blue (coastal/aerosol)	0.43 - 0.45	30
Band 2 - Blue 1	0.45 - 0.51	30
Band 3 - Green 2	0.53 - 0.59	30
Band 4 - Red 3	0.64 - 0.67	30
Band 5 - Near Infrared (NIR) 4	0.85 - 0.88	30
Band 6 - Shortwave Infrared (SWIR1) 5	1.57 - 1.65	30
Band 7 - Shortwave Infrared (SWIR 2) 6	2.11 - 2.29	30
Band 8 - Panchromatic	0.50 - 0.68	15
Band 9 – Cirrus	1.36 - 1.38	30
Band 10 - Thermal Infrared (TIRS 1)	10.60 - 11.19	100 * (30)
Band 11 - Thermal Infrared (TIRS 2)	11.50 - 12.51	100 * (30)

<sup>10</sup> Source: <https://landsat.usgs.gov/what-are-band-designations-landsat-satellites>



**Figure 4 Landsat image scenes covering the territory of Pakistan**

The spatial resolution of 30-meter in VNIR/SWIR bands with spectral range of 0.43-2.29  $\mu\text{m}$  acquired in 12-bit dynamic range with improved signal-to-noise ratio provides the best option for continuous forest monitoring over large areas at the regional and national scales. With the revisit time of 16 days, L8 OLI/TIRS provides good solution for continuous monitoring over large areas. Its free availability provides cost effective and sustainable data required for the MMRV at the national level. However, the US government is considering charging for access and will be decided by the end of 2018<sup>11</sup>. Therefore, free accessibility may not be guaranteed in the long term.

Characteristics	Descriptions
Data availability	2013 onwards
Revisit time	16 days
Bands	Ultra-Blue, VNIR (G, B, R, NIR); SWIR (SWIR 1, SWIR 2); PAN; CIRRUS; TIRS (TIRS 1, TIRS 2)
Spatial resolution	Coastal/Aerosol, VNIR, SWIR and Cirrus – 30m, PAN 15m, TIRS 100m
Dynamic range of acquisition	12 bits
Image data dynamic range	16 bits

<sup>11</sup> From excerpts of news dated 24 April 2018, available at <https://www.nature.com/articles/d41586-018-04874-y>

Scene Size	180 km North-South (along track) by 185 km east-west (cross-track)
Product level (for download)	L1TP (radiometrically calibrated and orthorectified using GCP and DEM)
Data format, resampling and SRS	GeoTIFF, Cubic Convolution, UTM

### ***Advantages of Landsat 8 OLI for continuous monitoring of forest***

- Spectral resolution of 0.43-2.29  $\mu\text{m}$  in VNIR/SWIR bands acquired in 12-bits dynamic range allowing greater separability in land use and vegetation types
- Revisit time of 16 days allowing forest monitoring of any area at the nominal interval of 16 days
- Free access via online download archives
- Availability of higher level of products with radiometric and geometrically corrected datasets, reducing the resources and efforts of pre-processing
- Larger scene swaths covering larger areas, reducing the resources for image processing
- Continuous availability of images of the same season of the same year over large areas
- Continuity of Landsat program with Landsat 9 OLI-2/TIRS-2 planned to be launched in 2020 without any gaps in the observations with similar characteristics as that of Landsat 8 OLI/TIRS

### ***Disadvantages of Landsat 8 OLI for continuous monitoring of forest***

- Spatial resolution of 30 m for VNIR/SWIR bands suitable for MMU of 0.36 ha which may not be suitable for sub-national monitoring in case the provincial forest definition adopts minimum area smaller than 0.5 ha (e.g. minimum area of 0.05 ha adopted by KP);
- Due to spatial resolution of 30 m, deforestation in smaller areas and degradation cannot be identified and quantified with required accuracy; and
- Requires good and high-speed internet connectivity for downloading large volumes of imagery data over defined intervals for monitoring interval period.
- Though the Landsat program remains the only continuous and consistent satellite observation mission and will continue in the foreseeable future with the announced launch of Landsat 9 OLI-2/TIRS-2 in 2020, free availability of the data after 2018 is still in doubt given the US government's ongoing review of its data policy.

### ***Alternative of Landsat 8 OLI for continuous monitoring of forest***

- In terms of spatial and spectral resolutions, there are several alternatives to Landsat datasets for continuous monitoring applications (e.g. SPOT 6/7, RapidEye, DMC, Deimos, SuperView/GeoJing, etc.). However, in terms of consistency in data coverage, availability (both current and future) and free/low cost accessibility, only Sentinel 2 MSI could be considered as a viable option.
- The recently launched (on 9 July 2018) Pakistan's own PRSS-1 earth observation satellite with optical sensor capable of 1m (3 foot) GSD<sup>12</sup> is the other option. The PRSS-1 has service lifespan of 7 years and was launched to provide data for China-Pakistan Economic Corridor (CPEC). However, the details of the mission and its imagery products, as well as its availability is not known yet.
- Several commercial high-resolution imagery products are available to cover the territory of Pakistan. SUPARCO<sup>13</sup> has been providing Spot 4/5<sup>14</sup> images and derived products to the users in Pakistan at lower costs. For the future monitoring, options like Spot 6/7 (1.5m GSD)

<sup>12</sup> <https://www.dawn.com/news/1418966/pakistan-launches-remote-sensing-satellite-in-china> and <https://spaceflightnow.com/2018/07/09/china-successfully-launches-two-satellites-for-pakistan/>

<sup>13</sup> Pakistan Space & Upper Atmosphere Research Commission

<sup>14</sup> Spot 4 and 5 are from the French Space Agency Centre National d'Etudes Spatiales (CNES) and are discontinued since 2015.



may be acquired through SUPARCO in subsidised cost to the provinces to establish their SLMS.

- For real/near real time monitoring of smaller forest areas sUAV (small Unmanned Aerial Vehicle) commonly known as drones (flying at height < 200m) can be used to take nadir photographs of the monitoring area to create RGB (true color) ortho-mosaics to assess the changes in forest coverage as well as canopy structure to monitor the degradation. Commercial multi-rotor sUAVs have lower endurance, flying up to about 30 mins in a mission, covering about 2~5 sq.km. While fixed winged sUAVs have endurance of 60-120 mins covering 10-20 km<sup>2</sup> to acquire single run image data of very high resolution 20 cm GSD. However, in case of Pakistan, civilian/commercial UAV flight missions may be subjected to security restrictions.

#### 2.4.4. *Design of Desktop Based SLMS Workflow*

A desktop-based workflow for implementing Forest Land Assessment as a part of SLMS is designed and piloted to be implemented for MRV in Pakistan. The workflow is based on Free and Open Source Software (FOSS) tools available free of cost for downloading. These FOSS tools used are Quantum GIS, Orfeo Toolbox, SAGA processing tool QGIS and FAO Open Foris Collect Earth. Limited use of programming scripting in Python/R is necessary to automate the workflow. The desktop SLMS processes workflow is shown in Figure 5.

##### **Process 1 Satellite Imagery Acquisition and Processing**

Availability of reference year archived Landsat images can be explored, and archived imageries can be downloaded from various sources using several free online tools such as

- USGS Glovis (<https://glovis.usgs.gov/next/#>)
- EarthExplorer (<https://earthexplorer.usgs.gov/>)
- USGS Landsat Look (<https://landsatlook.usgs.gov/viewer.html>)

Terrain corrected Level 1 (L1T) imagery products are used. L1T products are radiometrically corrected and orthorectified using ground control points and Digital Elevation Model (DEM) data correct for relief displacement. L1T products are the highest quality Level 1 products and are suitable for pixel level time series analysis (USGS, 2017).

Top of Atmosphere (TOA) correction is done using Dark Object Subtraction (DOS) algorithm to convert at-sensor radiance to Top-of-Atmosphere Reflectance. DOS method is used when there is no available data on atmospheric conditions and aerosol properties at the time of image acquisition. This method assumes that within the image, some pixels are in complete shadow and their radiances received in the satellite are due entirely to atmospheric scattering (path radiance). This path radiance values are then subtracted from each pixel value in the image. TOA correction can be applied using QGIS SCP plugin's TOA correction.

Additionally, topographic correction (topographic normalization) is recommended to remove topographic slope shadows using a Bidirectional Reflectance Distribution Function in correction algorithm for the images in the higher mountainous regions. However, there are only a limited number of tools in open source platform for image topographic normalization. Topographical correction using Normalization algorithm by (Law and Nichol, 2004) can be used without overcorrection and is suitable for sampling for further classification of images. However it should be noted that the DEM being used ASTER GDEM or SRTM DEM<sup>15</sup> (about 30 m resolution) may produce banding effect resulting in lower quality of corrected Landsat images. Topographic normalization can be done using SAGA (System for Automated Geoscientific Analysis)<sup>16</sup> Topographic Correction tool from within QGIS processing environment. Alternatively GRASS processing tool (i.topo.corr) can be used for topographic correction using C-Correction.<sup>17</sup>

Atmospherically (and topographically) corrected image bands are stacked (concatenated) to generated MSS composites (natural color, VNIR, SWIR, etc.) for further analysis. Individual MSS image scenes are stitched together (mosaicked) to cover a province or an area of interest.

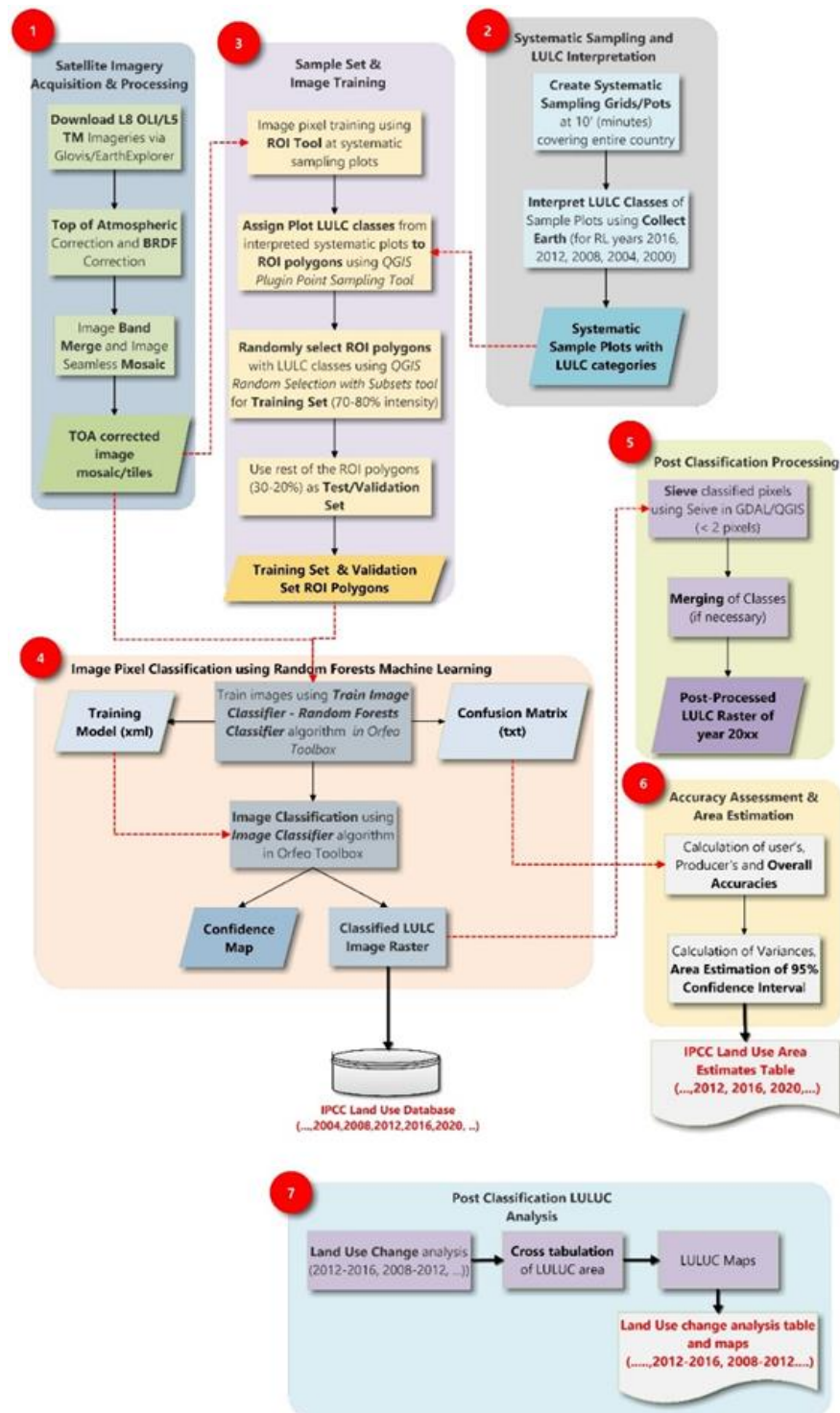
---

<sup>15</sup> <https://gdex.cr.usgs.gov/gdex/>

<sup>16</sup> <http://www.saga-gis.org/>

<sup>17</sup> <https://grass.osgeo.org/grass73/manuals/i.topo.corr.html>



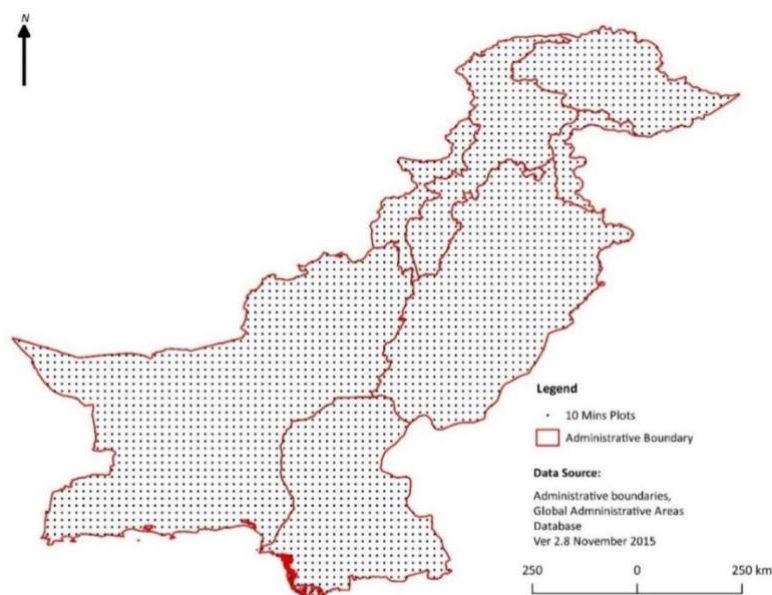


**Figure 5 Workflow for desktop based SLMS for forest land and activity assessment.**

## Process 2 Systematic Sampling Design and LULC Interpretation

Systematic sampling grids are generated to cover the territory of Pakistan for the first phase (Phase I)<sup>18</sup> sampling for IPCC Land Use classes to be used for preliminary wall-to-wall land use map preparation and forest inventory design (Figure 6). The systematic grids and the sample plots are created using Open Data and Open Source Tools and are a part of desktop-based Satellite Land Monitoring System (SLMS) workflow to be implemented for REDD+ FRL/FREL and MRV in Pakistan.

Due to the previous non-availability (restrictions of use) of the recent land cover/land use spatial data for designing the sample set (stratification), independent systematic grids have been generated. The systematic sample plots are initiated from 10' x 10' grids ( $\approx 16 \text{ km} \times 18 \text{ km}$ ) to cover the entire territory of Pakistan. The grids can be densified to 5' x 5' ( $\approx 8 \text{ km} \times 9 \text{ km}$ ) or 2.5' x 2.5' ( $\approx 4 \text{ km} \times 4.6 \text{ km}$ ) or further to represent the subnational levels, i.e. at provincial level. Grids should also be densified, if the accuracy levels of LULC product do not comply with the classification accuracy levels at 95 % confidence interval. Higher density of sample plots is expected to result in higher accuracy levels of LULC product. For the territory of Pakistan, provinces and federally administered areas the approximated number of sample units for different grid spacing are provided in Table 6.



**Figure 6 Systematic grid of the first phase sample plots at 10' interval (about 16 km x 18 km).**

Systematic plots grids are created using QGIS Research Tools. These plots are further stratified using Digital Elevation Model (elevation range, slope, aspect) and forest type regions. For the initial sampling, 10'x 10' grid plots are laid out throughout the country (Figure 6).

Upon the designing of systematic sample plots, stratification of land use land cover categories and other parameters are done using visual interpretation of Very High-Resolution (VHR) satellite imagery available in Google Earth, Bing Image and Google Earth Engine platforms. These systematic sampling plots generated are visually interpreted for IPCC Land Use Classes (Forest, Cropland, Grassland, Wetland, Settlement, Other Land) using customized Open Foris Collect Earth GUI data collection form. Land use classes with various other parameters for Forest (canopy cover, disturbances, etc.) are collected for different reference years (1996, 2000, 2004, 2008, 2012 and 2016).

<sup>18</sup> The first phase sampling is based on the regular 10' x 10' (about 16 km x 18 km) reference grid points. They are assessed visually for their land use and cover using VHR imagery (Google Earth). It is followed by the second phase sampling, when a subset of the regular 10' x 10' grid point locations classified visually as forests are visited in field for ground-truthing and NFI measurements.

**Table 6 Systematic sample plots for different grid spacing.**

Provinces	Primary Sample Plot (PSU)			
	10'	7.5'	5'	2.5'
KP	268	477	1,073	4,276
AJK	48	89	194	774
FATA	90	152	354	3,901
GB	246	434	980	1,391
Sindh	459	810	1,831	7,292
Punjab	701	1,244	2,787	11,174
Balochistan	1,138	2,033	4,567	18,283
ICT	4	5	13	48
<b>Total</b>	<b>2,954</b>	<b>5,244</b>	<b>11,799</b>	<b>47,139</b>



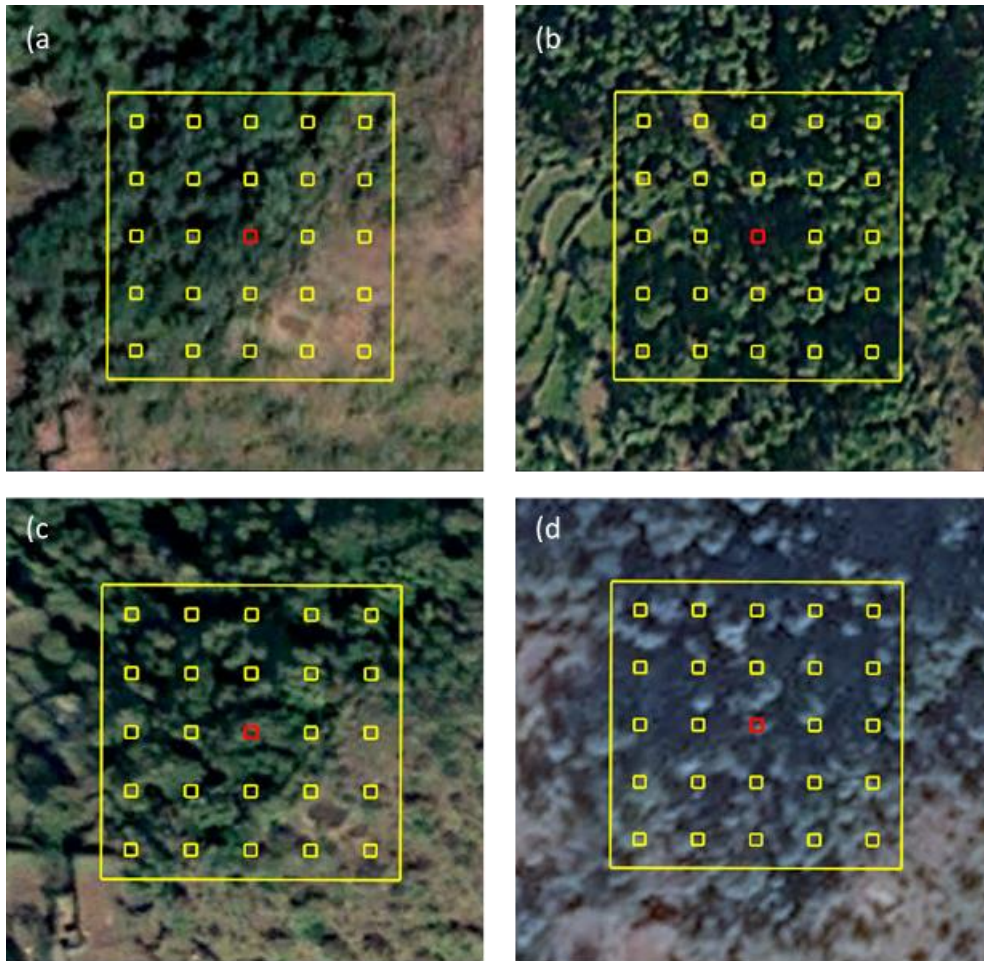
**Figure 7 Visual interpretation plot and sub-plots**

For visual interpretation (VI), these sample plots are used as the centre (Primary Sampling Unit) for 5 x 5 (25 sub-plots) in a cluster plot configuration of 50 m x 50 m covering an area of 0.25 ha. The sub-plots are 2 m x 2 m in size.

In Figure 7 plot, 14 sub-plots fall under tree cover (i.e.  $14/25 = 56\%$ ), therefore the plot has approximately 56 % tree cover.

Comparison of VI plots between reference years 2004, 2008, 2012 and 2016 present in Figure 8 shows forest cover change dynamics in Plot#8073 in AJK.





**Figure 8 Forest change in Plot#8073 in AJK (a) 2004 (b) 2008 (c) 2012 and (d) 2016.**

For Forest plots, sub-plots with tree cover are counted to estimate tree cover in the plot. Observable disturbances in the plot can also be interpreted in the VHR images to the extent possible. Disturbances classes used are:

- Logging
- Fire
- Grazing
- Landslide
- Tree Plantation
- Shifting Cultivation
- Construction
- Others

If the plot has mixed LULC, the mixed classes are also indicated.

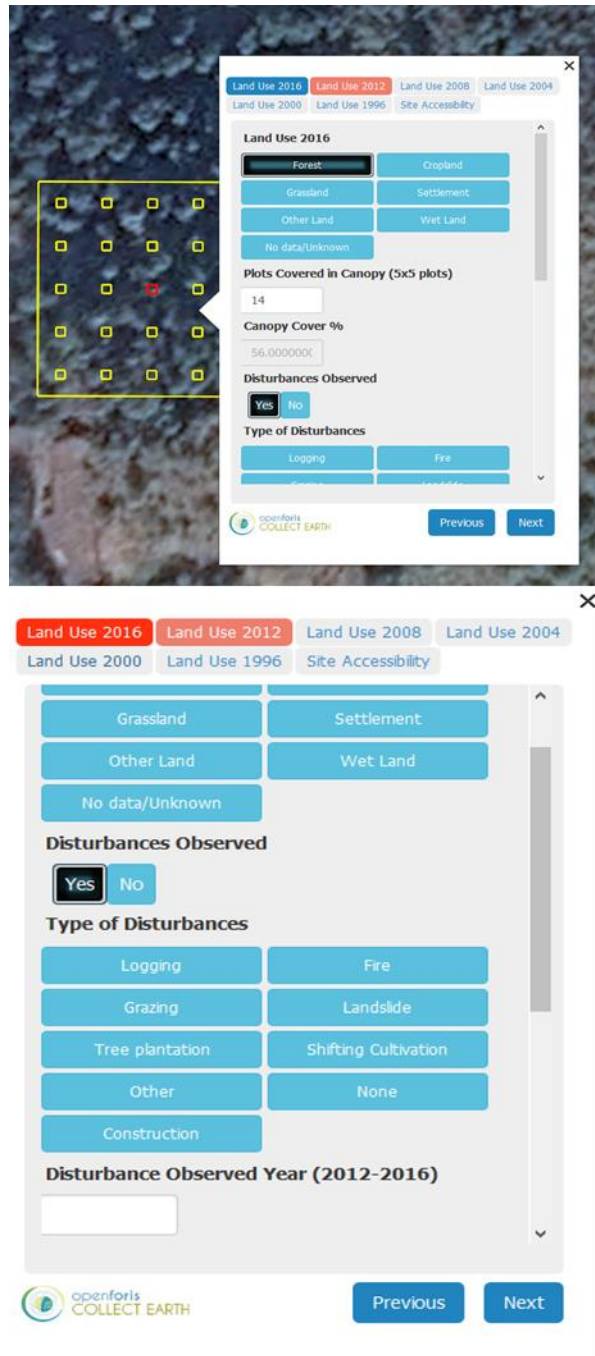
One of the following interpreted image sources are indicated with the acquisition date of the image:

- Google Earth
- Bing Maps
- Landsat 8 OLI
- Landsat 5 TM
- Sentinel 2
- Spot 5/Spot 4
- Other VHR
- No Satellite Images Available



Accessibility categories of the plot site is also visually interpreted. The accessibility classes are:

- Accessible
- Inaccessible due to Slope
- Inaccessible due to Water Body
- Inaccessible due to Restrictions
- Inaccessible due to Other Reasons
- Unknown



The image shows two views of the CollectEarth Visual Interpretation interface. The top view shows a 5x5 grid of plots with a red dot indicating the selected plot. The bottom view shows the data entry form for the selected plot.

**Land Use 2016**

Forest (selected) | Cropland

Grassland | Settlement

Other Land | Wet Land

No data/Unknown

**Plots Covered in Canopy (5x5 plots)**

14

**Canopy Cover %**

56.000000

**Disturbances Observed**

Yes (selected) | No

**Type of Disturbances**

Logging | Fire

Grazing | Landslide

Tree plantation | Shifting Cultivation

Other | None

Construction

**Disturbance Observed Year (2012-2016)**

Previous | Next

**Figure 9 CollectEarth Visual Interpretation interface used for interpretation of sample plots for Phase I sampling using Google Earth.**

### ***Process 3 Designing Sample Set for Image Training***

Visually interpreted points with land use classes are used as 'seeds' for generating sample sets to develop training and validation subsets. The training sets with regions of interest (ROI) are used for training image pixels for classification. The validation sets are used for independent check of the accuracy and subsequent area estimation.

### ***Process 4 Image Classification using Random Forests***

Image classification is conducted using machine learning algorithm Random Forests in QGIS. Random Forests is a classification and regression algorithm increasingly being used for satellite image classification for the creation of continuous field data such as percent tree cover, biomass, land cover type, etc. Random Forests is a non-parametric regression model capable of using continuous and categorical data and is easy to parametrize, is non-sensitive to over fitting, can handle outliers in training data and also calculates ancillary information such as classification error and variable importance.

RF algorithm is based on the ensemble model that uses the results from many different models to calculate a response. In Random Forest, several decision trees are created, and the response is calculated based on the outcome of all the decisions trees. Some common applications of random forests classification include land cover and land cover change mapping. Regression applications include continuous field mapping, e.g. percent tree cover, percent shrub cover, impervious surfaces and biomass mapping.

Satellite image classification is done using Orfeo Toolbox classifier tool. The classification is done in two steps. The first step involves training of image pixels using the classification sample set and defining the depth of the 'tree', minimum number of samples in each tree, termination of regression tree and other parameters required. The first step also involves defining of maximum training sample size and validation sample size. The second step involves classification of trained pixels using previously created classifier model.

### ***Process 5 Post Processing***

Post classification processing is done to remove noises such as 'salt and pepper' effects of individual classified pixels. This is often done by "sieving" isolated pixels and replacing them with the classification of surrounding majority class pixels. For the case of LULC of Pakistan, the minimum mapping unit is considered as 2 pixels (i.e. 60 x 60 m). Threshold for sieving needs to be defined accordingly. QGIS SCP plugin tool can be used for 'sieving'.

### ***Process 6 Accuracy Assessment and Area Estimation***

Accuracy assessment of LULC map classes and areas estimation of LULC classes is done using the sample of reference observations of the study area. The basic idea here is the assumption that the mapped areas of land cover (or change in land cover) are biased because of image classification errors, which are identified by comparing the map to a sample of reference observations. Area estimates and accuracy are then inferred by analysing the sample (FAO 2016; Olofsson et al., 2014). Accuracy assessment and area estimation can be done following the process prescribed by (FAO, 2016), which includes three main steps:

- design and selection of sample
- response design: interpretation of sample and decision of agreement of reference and map observations
- analysis of sample

Error matrix is constructed by 'cross-tabulating' mapped samples vs reference samples in a tabular format as shown in Table 7 (adopted from Olofsson et al. 2014).

**Table 7 Population error matrix of four classes with cell entries (p<sub>ij</sub>)**

		Reference							
		$A_{m,i}$	$W_i$	$A_{m,i}$	$W_i$	$A_{m,i}$	$A_{m,i}$	$W_i$	
Map	Class 1	p <sub>11</sub>	p <sub>12</sub>	p <sub>13</sub>	p <sub>14</sub>	p <sub>1.</sub>			
	Class 2	p <sub>21</sub>	p <sub>22</sub>	p <sub>23</sub>	p <sub>24</sub>	p <sub>2.</sub>			
	Class 3	p <sub>31</sub>	p <sub>31</sub>	p <sub>31</sub>	p <sub>31</sub>	p <sub>3.</sub>			
	Class 4	p <sub>41</sub>	p <sub>41</sub>	p <sub>41</sub>	p <sub>41</sub>	p <sub>4.</sub>			
	<b>Total</b>	p <sub>.1</sub>	p <sub>.2</sub>	p <sub>.3</sub>	p <sub>.4</sub>	1			

Error matrix of sample counts for randomly selected stratified validation points  $n_{ij}$ . The total map samples in a Class  $i$  is represented by  $n_{i.}$ . The proportion of mapped area  $A_{m,i}$  for Class  $i$  is represented by  $W_i$ , where

$$W_i = \frac{A_{m,i}}{\sum A_{m,i}}$$

The sample-based estimator for area proportion  $p_{ij}$  is given by  $\hat{p}_{ij} = W_i \frac{n_{ij}}{n_{i.}}$

Where,  $i$  denotes the row and  $j$  denotes the column in the error matrix. For stratified random sampling designs, where the strata correspond to the map classes, error matrix may be represented in terms of estimated area proportions  $\hat{p}_{ij}$ .

User's accuracy of class  $i$  is  $\hat{U}_i = \frac{\hat{p}_{ii}}{\hat{p}_{i.}}$

and its complimentary measure commission error of class  $i$  is  $1 - \frac{\hat{p}_{ii}}{\hat{p}_{i.}}$

Producer's accuracy of class  $j$  is  $\hat{P}_j = \frac{\hat{p}_{jj}}{\hat{p}_{.j}}$

and its complimentary measure omission error of class  $j$  is  $1 - \frac{\hat{p}_{jj}}{\hat{p}_{.j}}$

The Overall Accuracy is given by  $\hat{O} = \sum_{j=1}^q \hat{p}_{jj}$

and its estimated variance is given by  $\hat{V}(\hat{O}) = \frac{\sum_{i=1}^q W_i^2 \hat{U}_i(1 - \hat{U}_i)}{n_{i.} - 1}$

The estimated variance for User's Accuracy by  $\hat{V}(\hat{U}_i) = \frac{\hat{U}_i(1 - \hat{U}_i)}{n_{i.} - 1}$

The 95% confidence intervals are estimated as  $\pm 1.96 \sqrt{\hat{V}(\hat{O}_i)}$

for Overall Accuracy and  $\pm 1.96 \sqrt{\hat{V}(\hat{U}_i)}$  for Users' Accuracy.

The estimate of confidence interval is given by

Standard Error  $SE(\hat{p}_{.j}) = \sqrt{\sum_i \frac{W_i \hat{p}_{ij} - \hat{p}_{ij}^2}{n_{i.} - 1}}$  of the stratified estimator of estimated proportion area.

### **Process 7 Land Use and Land Use/Cover Change Activity Data**

Activity data generation is based on the LULUC statistics analysed with GIS operations. The objective is to produce a raster layer indicating the locations for class changes and their type in order to calculate statistics of how much area changes have there been from one category to the other.

The forest degradation analysis is based on the visually interpreted forest plots with assigned canopy cover ratios for different years. The statistical analysis can be conducted in a spreadsheet software such as MS Excel. The mean canopy coverage changes and 95 % confidence intervals are calculated between two points of time under interest (Table 8).



**Table 8 Canopy change analysis based on the visually interpreted plots for AJK. VHR imagery is not available from 1996.**

Variable	2012-2016	2008-2012	2004-2008	2000-2004	2008-2016
Mean canopy change - %-units	0.1	3.7	0.2	-1.6	1.0
Plot Count	100	29	17	5	115
Standard deviation	11	14	10	2	11
Confidence interval Lower (95%)	-2.0	-1.7	-5.1	-4.3	-1.1
Confidence interval Upper (95%)	2.3	9.1	5.6	1.1	3.1

## 2.5. Methodological Framework for National Forest Inventory (NFI)

National Forest Inventory (NFI) has been designed and piloted to collect reliable data to estimate the Emission/Removal Factors (EF/RF) for various forest strata throughout the country. The NFI is designed considering the existing capacities of the country and the approach already being implemented by Provincial Forest Departments. Following the international best practices, NFI is designed following stratified sampling to establish permanent and complementary temporary sampling plots. The development of the NFI also followed a strategic and participatory stepwise process (Table 9)

**Table 9 Design process for NFI in Pakistan**

Steps	Process	Outcome/Design Decisions
Step 1	<ul style="list-style-type: none"> <li>Creation of any auxiliary information needed for designing the sample, like land use classification, updated administrative boundaries</li> <li>Testing different sampling possibilities. Information used as background information for sampling design</li> <li>Creating stratification based on proper data sources</li> <li>Deciding the methodologies for sampling and designing the sample.</li> </ul>	<ul style="list-style-type: none"> <li>Auxiliary information for background and input information for stratification and sampling design.</li> <li>Stratification</li> <li>Ready sampling design, report</li> <li>List of sample plots for field measurements</li> </ul>
Step 2	<ul style="list-style-type: none"> <li>Designing the inventory protocol. Includes decisions on which variables are included in field work</li> <li>Designing the estimation process, including allometric models and estimation calculation</li> </ul>	<ul style="list-style-type: none"> <li>Inventory manual</li> <li>List of allometric models to be used in calculation process</li> <li>Decisions on the estimation and error calculations taking</li> </ul>

		into consideration the sampling design
Step 3	<ul style="list-style-type: none"> <li>Deciding composition of field teams</li> <li>Selection of members for field teams</li> <li>Practical training for field teams</li> <li>Distribution of field plots for field teams and decisions on work order</li> </ul>	<ul style="list-style-type: none"> <li>Field team composition ready</li> <li>Work schedule ready</li> </ul>
Step 4	<ul style="list-style-type: none"> <li>Field plot measurements</li> <li>Quality control measurements</li> <li>Error checks on data in the office during the field work</li> </ul>	<ul style="list-style-type: none"> <li>Quality checked field data</li> </ul>
Step 5	<ul style="list-style-type: none"> <li>Post-processing of GPS coordinates</li> <li>Field plot calculation</li> <li>Processing of all secondary data collected from the field, e.g. pre-processing of vegetation samples from litter or shrub pools or soil samples</li> <li>Laboratory work different samples for determining carbon content</li> </ul>	<ul style="list-style-type: none"> <li>Plot-level field data with post-processed GPS coordinates</li> </ul>
Step 6	<ul style="list-style-type: none"> <li>Calculation of average carbon content on all pools for all plots</li> <li>Calculation of average carbon content on all pools for different strata</li> <li>Calculation of error estimates</li> </ul>	<ul style="list-style-type: none"> <li>Field plots with carbon content for all pools</li> <li>Average carbon content for all strata on all pools</li> <li>Report on average carbon content and error estimates</li> </ul>
Step 7	<ul style="list-style-type: none"> <li>Reporting on field work and results</li> <li>Recommendations for the future</li> <li>Presentation of results</li> </ul>	<ul style="list-style-type: none"> <li>Report on National Forest Inventory results and recommendation</li> </ul>

#### 2.5.1. NFI integration with SLMS

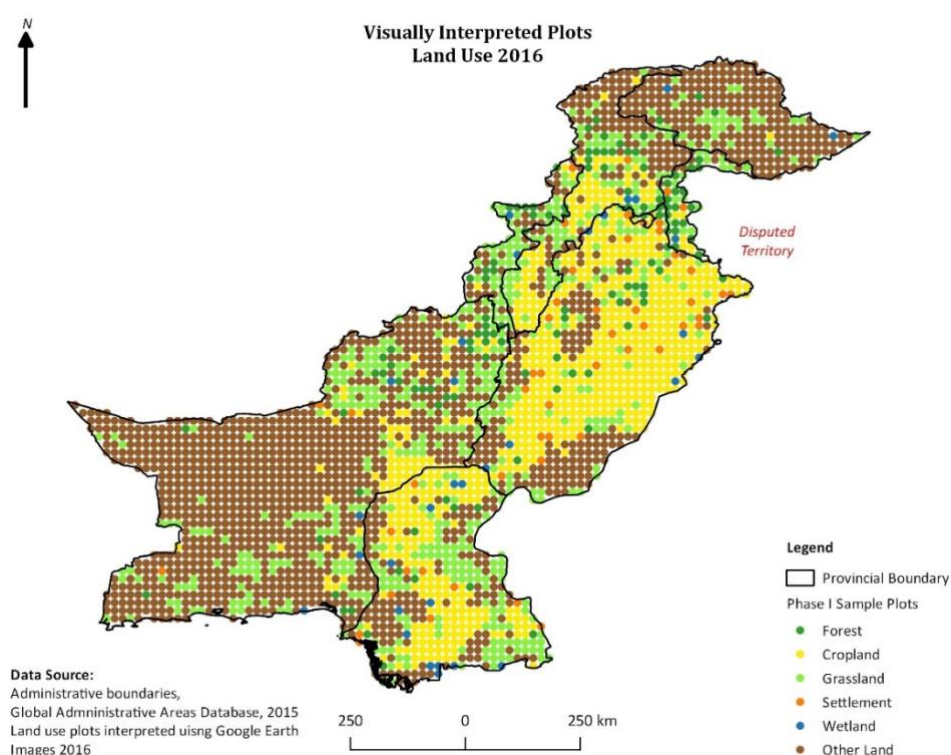
The sampling design of the National Forest Inventory (NFI) is developed in conjunction with the SLMS process using remote sensing satellite imageries and ancillary data. There are various sampling design schemes, but the selection of specific design should be a compromise between accuracy, limitations and available resources. Basic rule is to minimize the error with the available resources in terms of financial, time and technical capacities. Usually stratification is a good way to optimize the sampling efforts. Stratification enables the same level of accuracy for carbon stock estimates with less sample plots. The stratification can be done using a combination of data sources which are related to the main variable of interest, in this case aboveground carbon.

The NFI sampling scheme is designed using stratified two-phase sampling process with integration of the SLMS processes. The 10'x10' (or 5'x5'/2.5'x2.5'/1.25'x1.25) systematic grid which has been created for LULC visual interpretation for the first phase (Phase I) sampling. The second phase sample (Phase II) was selected from the Phase I sample based on the accessibility criteria. The stratification is done based on land use land cover classification. Additional data sources were used for stratification, as needed, e.g. elevation information to ensure accessibility to plots.

The first phase sampling involved layout of systematic plots at 10' x 10' throughout the territory of Pakistan and visual interpretation of the plots for land use stratification for the year 2016. Total of 2,954 plots were laid out to represent land use pattern of the year 2016 (*refer* Table 10 and Figure 10). From these first phase plots, out of total 128 visually classified forest points, 95 points have been included as primary sampling units (PSUs) in the second phase sampling in the field for NFI after analysing the accessibility conditions.

**Table 10 Distribution of Phase I plots**

Land Use	GB	KP	FATA	AJK	ICT	PB	SD	BN	Total
Forest	5	19	16	19	1	26	12	30	128
Cropland	1	72	3	6	3	403	171	61	720
Grassland	33	65	40	14	0	86	123	197	558
Wetland	2	3	2	1	0	7	12	6	33
Settlement	0	2	1	2	0	32	11	3	51
Other Land	205	107	28	6	0	147	130	841	1464
<b>Total</b>	<b>246</b>	<b>268</b>	<b>90</b>	<b>48</b>	<b>4</b>	<b>701</b>	<b>459</b>	<b>1138</b>	<b>2954</b>



**Figure 10 Phase I sample plots and land use categories**

Land use assessment of plots shows general proportion of land use in the country (Table 11).

**Table 11 Proportional Sample of Phase I plots (10') by land use.**

Land Use	No. of Plots	Proportion of Plots (%)
Forest	128	4.33
Cropland	720	24.37
Grassland	558	18.89
Wetland	33	1.12
Settlement	51	1.73
Other Land	1,464	49.56
<b>Total</b>	<b>2,954</b>	<b>100 %</b>



Of the total plots, 4.33 % are forested plots, indicating approximate proportion of forest in the country. However, it should be noted that this is indicative and is refined/updated by wall-to-wall mapping using satellite images. In principle, sufficient sampling will yield similar proportions of the land use in comparing with the wall-to-wall mapping.

Land use assessment of plots shows general proportion of land use in the country. On the assessment of the land use categories of the Phase I plots for the provinces, estimation of the land use proportions for the year 2016 are shown (Table 12). Similarly, more accurate estimation of land use coverages is given by wall-to-wall mapping and error-adjustment using satellite imagery and more intense grid of visually assessed plots.

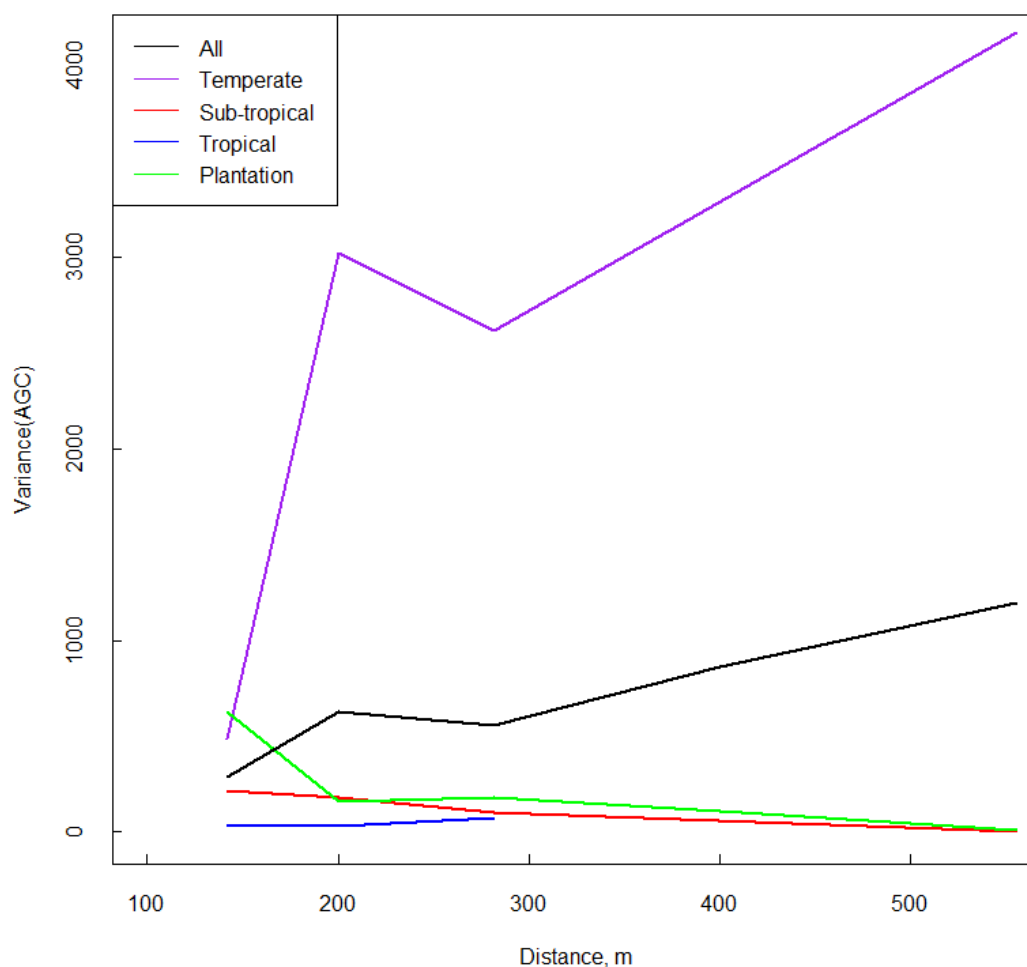
**Table 12 Proportions of land use in provinces based on Phase I sampling (in %)**

Land Use	GB	KP	FATA	AJK	PB	SD	BN
Forest	2.0	7.1	17.8	39.6	3.7	2.6	2.6
Cropland	0.4	26.9	3.3	12.5	57.5	37.3	5.4
Grassland	13.4	24.3	44.4	29.2	12.3	26.8	17.3
Wetland	0.8	1.1	2.2	2.1	1.0	2.6	0.5
Settlement		0.7	1.1	4.2	4.6	2.4	0.3
Other Land	83.3	39.9	31.1	12.5	21.0	28.3	73.9

#### 2.5.2. Sample Design

Cluster sampling was designed because of several practical considerations. Clusters are cost-efficient to measure since field plots are close to one another. An important point to note is spatial autocorrelation. Spatial autocorrelation means that field plots which are close to one another are more similar than plots which are far apart. The level of spatial autocorrelation has been tested and the distance between the plots within a cluster set are based on the pilot inventory data.

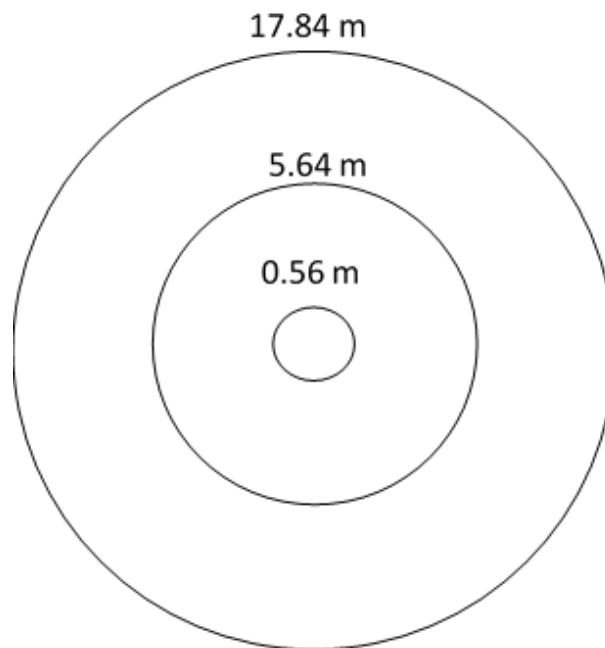
When applying the stratified two-phase sampling, the Phase II sample points were treated as the Primary Sample Units (PSU) for forest inventory. Secondary Sampling Units (SSU) are created using the PSU as the starting point. The SSUs can be in line, L-shape, square, triangle or cross formation or some combination of those. The number of plots in a cluster was set so that a field team can measure one cluster per day. The cluster design can also be combined with other sampling methods by replacing clusters with stratified simple random sampling when land uses are very scattered and fragmented.



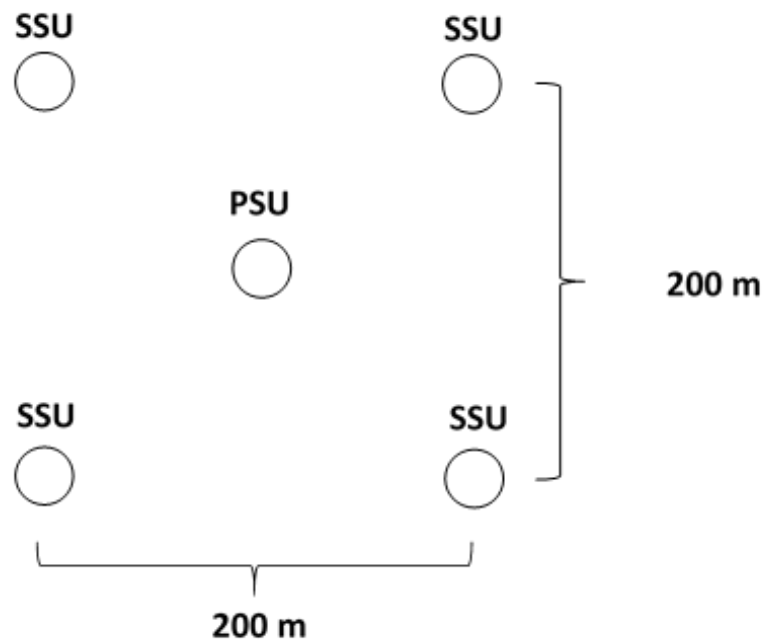
**Figure 11 Above-ground carbon density semi-variogram as a function of the distance between neighboring sample plots over the different climate zones.**

The plot design was decided in relation to the variation in the forest. The larger the sample plots are, the lower the between plot variation, and with lower between plot variation, number of sample plots required for certain precision level is decreased. The selected plot dimensions have been applied in Pakistan previously in KP and GB carbon inventories. It is based on the 17.84 meter (~1000 m<sup>2</sup>) circular fixed radius nested plot (Figure 12). The plot design has two nested subplots, 5.64 meters radius (~100 m<sup>2</sup>) and 0.56 meters radius (~1 m<sup>2</sup>). The more time-consuming and difficult pools are measured from the inner subplots. The optimal distance between the plots was assessed using the semi-variogram analysis to capture the maximum biomass variation using canopy cover as the proxy variable for above-ground biomass. The optimal distance was assessed to be 200 meters between the nearest squared cluster corner plots (Figure 13). After the pilot NFI inventory, the same exercise was conducted with the measured biomass plots (Figure 11).

The complete forest inventory workflow is illustrated in Figure 14.



**Figure 12** Field plot design of nested circular fixed radius plot



**Figure 13** Cluster design with Primary Sampling Unit (PSU) and four Secondary Sampling Units (SSU) in square formation.



### 2.5.3. *National Forest Inventory protocol and quality assurance*

Due to logistical optimisation, one field team is recommended to be comprised of 3 core members. A team should have a team leader who takes responsibility of the equipment and ensures that everything runs smoothly. Team leader is also responsible for the data. The team should also comprise of a botanist/ecologist or a team member with good knowledge of the tree species in the inventory region. One person should be responsible for the navigation and GNSS devices. A local forester or other local contact person is useful to get local information on the logistics, tree species, or for example, navigation. Whenever other variables are included for measurement, team composition should be updated to take this into consideration. Team members are of course not confined to their respective duties only, but all tasks are shared evenly, and everyone should know the basics from all tasks to be able to help in any task when needed.

The aboveground and, belowground pools are included in the National Forest Inventory. For the carbon stock assessment the belowground pool is derived from the aboveground pool using the root-shoot ratio coefficients. This is because the belowground pool is the most difficult and time-consuming pool to directly measure, and there is strong relation between the above- and belowground biomass pools.

The most important aspect of inventory measurements is that the measurement rules are set beforehand, the rules are clearly explained in field manual and the rules are taught to the field teams in inventory training before starting measurement campaign. Proper field training is one key thing to ensure that the quality will be on par with the requirements. This is necessary especially when the measurement practices introduce some new equipment. Also, it is important to have rules for different problem situations, for example when breast height location on a tree trunk has a branch or some anomaly. However, if there are some problems in the field which have not been covered in field training, the head of the forest inventory process should always be contacted immediately, if possible, or informed before heading to the following clusters. The field manual should then be updated to cover any new emerging situation.

Aboveground measurements are quality controlled by the other field teams. About 10 percent of field plots should be remeasured for quality control purposes. The quality-controlled plots will be used to determine the variation between teams and find any possible systematic measurement errors. When several field teams are doing field work in the same region, the field teams can quality control each other. If only one team is doing field work, a separate quality control team should go and remeasure the required number of plots. The quality control measurements are then compared at the office to the original measurements for any bias in measurements. If problems are discovered, field teams can be retrained to ensure that the rest of the field work will be on par. As part of the quality control, the recorded data files should also be quality controlled. This should be done preferably in near-real time during the campaign. In case of any possible problems they can be rectified in the field.

The detailed NFI Protocol and field survey manual is attached separately in the National Forest Inventory and Field Surveying Manual Version 1.1. The manual also includes a specific protocol for measurements in mangrove forests.

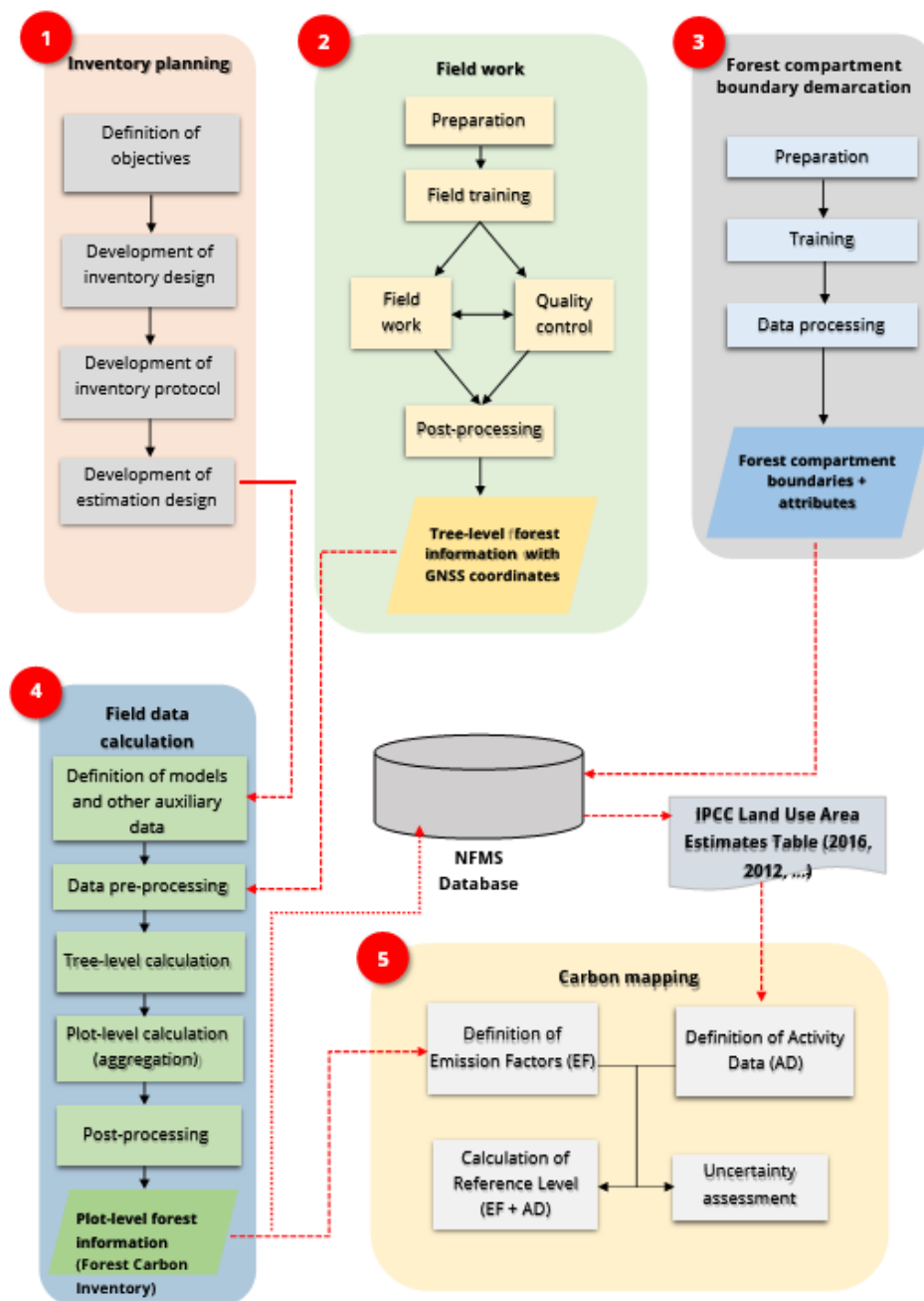


Figure 14 Workflow of the National Forest Inventory process and integration with NFMS database

#### 2.5.4. *Data Storage and Processing*

**Data entry.** Both the tree-level field data and the GNSS coordinates are entered appropriately in the pre-designed field forms and tally sheets during the field work found in the manual. Alternatively, mobile devices such as tablets, mobile phones or field computers can be used instead of paper forms. Digital data is sent directly to the data processing unit. In this way, any quality issues could be caught during the field work and near-real time corrections could be made as needed. If paper tally sheets and forms are used, data entry should be done immediately after the field work, when everything is fresh in field team members' memory.

**Plot position post-correction.** The GNSS coordinates should be post-processed using a differential correction process in case the differential devices have been used. In differential correction, all the PSU and SSU center coordinates are corrected with base station data. A base station is located at a known location, either as a physical GNSS receiver station or a temporary station setup in proximity of the inventory area. The plot center positions are corrected based on a correction function created in the base station. In case of handheld GNSS device units with relatively high accuracy of 2-5 m meters, averaging function needs to be used to ensure averaging of multiple position observations in the plot center.

**Data cleaning.** The tree-level data processing involves data checks and pre-processing for making sure that data does not contain any problems. In the case of NFI in Pakistan data processing and storage involves three steps:

Step 1: Data entry into worksheet/database system using worksheet or customized applications. Data is entered using customized application developed on OpenForis Collect<sup>19</sup> (Figure 15).

Step 2: Validation of entered data for consistency and accuracy

Step 3: Uploading of validated data into NFMS National Forest Inventory Database

**Data export.** Data is converted to or exported in the CSV format which is suitable for the spreadsheet software used for inventory calculation.

---

<sup>19</sup> <http://www.openforis.org/tools/collect.html>



**Figure 15** Screen capture of customized OpenForis Collect data entry tool.

**Height diameter model development.** The first inventory calculation step is to develop height-diameter (H-D) models. Once the heights have been measured only from sample trees, the H-D models are used to calculate height for all trees. H-D models are usually developed per species or per species-groups. The models are usually made using non-linear regression, like Näslund or power function. Also, many advanced methods can be included like mixed modelling (Mehtätalo et al. 2015). The best models should always be selected after testing different models with the data. For example, in case of the NFI pilot, 19 models are developed covering the major species and species groups and the plot-specific regression coefficients are derived. The quality of the models is measured using descriptive variables for mean error (RMSE and relative RMSE) and (Bias, relative Bias and Bias p-value) as illustrated in

Table 13.

**Table 13 The Diameter-Height model descriptive statistics.**

D-H Model Species	RMSE	RMSE %	Bias	Bias %	Bias p-value
Pinus wallichiana	4.75	0.23	0.00	0.00	0.99
Juniperus excelsa	1.07	0.21	-0.08	-0.02	0.36
Quercus incana	3.25	0.32	0.03	0.00	0.95
Eucalyptus	2.13	0.21	-0.12	-0.01	0.38
Acacia	1.73	0.27	-0.16	-0.03	0.12
Mangrove (Avicennia marina, Rhizophora mucronata, Ceriops tagal)	1.01	0.29	-0.02	0.00	0.80
Dalbergia sissoo	1.63	0.18	-0.03	0.00	0.88
Pinus gerardiana	1.73	0.21	-0.08	-0.01	0.77
Capparis decidua	1.84	0.30	-0.04	-0.01	0.93
Salvadora oleoides	1.15	0.28	-0.01	0.00	0.96
Tamarix aphylla	1.60	0.21	0.02	0.00	0.85
Monothea buxifolia	1.20	0.30	-0.03	-0.01	0.87
Olea ferruginea	1.35	0.25	-0.03	-0.01	0.78
Abies pindrow	5.51	0.33	-0.36	-0.02	0.54
Prosopis cineraria & Prosopis juliflora	1.13	0.15	-0.01	0.00	0.90
Cedrus deodara	1.03	0.05	-0.03	0.00	0.92
Pinus roxburghii	2.19	0.13	-0.23	-0.01	0.41
Conifer	3.53	0.25	-0.06	0.00	0.70
Deciduous	1.95	0.27	-0.14	-0.02	0.01

**Allometric modelling.** The other important set of models are the allometric models when estimating volume or biomass of the individual trees. The most important aspect of the allometric models is that the selected models are applicable for the geographical region and the trees in question. Moreover, it is important that the data and the measurement practices are applicable with the model. Usually the biomass models require measured diameter at breast height, tree height and/or wood density as the model explanatory variables. The available allometric equations recommended for the NFI calculation are found in Table 14.



**Table 14 The identified equations for the tree-level aboveground biomass / carbon stock calculation. D refers to diameter at breast height, H to height and  $\rho$  to wood density.**

Species scientific name	Vernacular name	Allometric equation	Reference
<i>Cedrus deodara</i>	Deodar	$AGB = 0.1779(D^2H)^{0.8103}$	Ali 2015
<i>Pinus wallichiana</i>	Kail	$AGB = 0.0631(D^2H)^{0.8798}$	Ali 2015
<i>Pinus gerardiana</i>	Chilghoza	$AGB = 0.0253D^{2.6077}$	Ali 2015
<i>Abies pindrow</i>	Fir	$AGB = 0.0954(D^2H)^{0.8114}$	Ali 2015
<i>Picea smithiana</i>	Spruce	$AGB = 0.0843(D^2H)^{0.8472}$	Ali 2015
<i>Avicennia marina</i>	White mangrove (Timar)	$AGB = 0.827D + 0.275$	Prasanna et al 2017
<i>Rhizophora mucronata</i>	Kamo	$AGB = 0.8069D^{2.5154}$	Kirui et al 2006
General	Coniferous species	$AGB = 0.1645(\rho D^2H)^{0.8586}$	Ali 2015
General	All species	$AGB = 0.112(\rho D^2H)^{0.976}$	Chave et al 2014

**Plot level and stratified aggregation.** The data calculation should result in aggregated plot-level aboveground biomass and carbon results with the post-processed GNSS coordinates. The above-ground biomass density is calculated using the sample plot data to represent biomass density per hectare (ha). The belowground biomass for a plot is calculated using the default IPCC root-shoot ratios (

Table 15). The default IPCC fraction (0.47) is applied to convert biomass to carbon. The plot level averages can then be used to develop average carbon contents per forest and land use classes.

**Table 15 The applied IPCC root-shoot ratios adapted from Table 4.4<sup>20</sup> of the IPCC Good Practice Guidance (2006).**

Domain	Vegetation type	Aboveground biomass (t/ha)	Mean value (BGB:AGB)
Tropical/Sub-tropical Forest (Dry)	Riverine forest	>20	0.28
	Riverine forest	<20	0.56
	Mangroves <sup>21</sup>	NA	0.29
	Eucalypt plantation	<50	0.44
	Eucalypt plantation	50-150	0.28
	Eucalypt plantation	>150	0.20
Sub-tropical & Temperate Forest	Conifers	<50	0.40
	Conifers	50-150	0.29
	Conifers	>150	0.20
Temperate Forest	Oak forest	>70	0.30
	Other broadleaf forest	<75	0.46
	Other broadleaf forest	75-150	0.23
	Other broadleaf forest	>150	0.24

**Emission/removal factor development.** Emission and removal factors are combined with the activity data to create FREL/FRL over a historical period. The emission and removal factors are developed according to the stock-difference approach described in the IPCC Guidelines (2006). The factors represent emissions and removals per ha of land, which is either remaining as forest, has been converted to non-forest or to forest.

## 2.6. Methodological Framework of GHG-I

The National Communications and Biennial Update Report submissions shall be prepared in accordance with the guidelines contained in UNFCCC COP decision 2/CP.17. A national GHG inventory is a key element of the national communication. A greenhouse gas inventory is a comprehensive listing of annual GHG emissions and removals resulting directly from human activities by sources. An inventory estimates emissions and removals for one year or several years. For the Non-Annex countries, the Initial National Communication inventory for 1994 and National Communication inventory for 2000 are suggested, but they are also welcomed to report other years. It is mandatory to report CO<sub>2</sub>, CH<sub>4</sub> and N<sub>2</sub>O, while they are encouraged to report other gases according to their capacities.

The IPCC inventory guidance (IPCC 1997, 2000 and 2003) applicable to non-Annex I Parties refers to six inventory sectors: Energy; Industrial Processes; Solvent and Other Product Use; Agriculture; Land Use, Land-Use Change and Forestry (LULUCF); and Waste. Within these sectors, individual source and sinks categories are defined. Updated guidance for the development of national GHG inventories is provided in the 2006 IPCC Guidelines for National Greenhouse Gas Inventories. IPCC 2006 refers to five inventory categories including energy; industrial processes and products; agriculture, forestry and other land use; waste and other. Parties to the UNFCCC are required to report their inventories in line with the definitions and structure of these sectors, and the source and sink categories within each sector, so that reporting is comparable across Parties.

<sup>20</sup> [https://www.ipcc-nggip.iges.or.jp/public/2006gl/pdf/4\\_Volume4/V4\\_04\\_Ch4\\_Forest\\_Land.pdf](https://www.ipcc-nggip.iges.or.jp/public/2006gl/pdf/4_Volume4/V4_04_Ch4_Forest_Land.pdf)

<sup>21</sup> [https://www.ipcc-nggip.iges.or.jp/public/wetlands/pdf/Wetlands\\_separate\\_files/WS\\_Ch4\\_Coastal\\_Wetlands.pdf](https://www.ipcc-nggip.iges.or.jp/public/wetlands/pdf/Wetlands_separate_files/WS_Ch4_Coastal_Wetlands.pdf)



The GHG-I reports contain the following contents:

- Tables of annual emission and removal estimates by source, with estimates expressed in units of mass per year, and the year or years;
- Worksheets showing how emissions are calculated, including all parameters used for calculations;
- For each source, a description of the methodology, the sources of data (e.g. activity data, emission factors, methodologies), the actual data and a description of uncertainties, and quantitative assessment of uncertainties (if possible); and
- Other informative background data (e.g. a national energy balance, a description of GHG sources that are believed to be important but cannot be estimated).

The GHG-I processes must be transparent, consistent, comparable, complete and accurate in the context of the UNFCCC reporting:

**Transparency** means that the assumptions and methodologies used for an inventory are clearly explained to facilitate replication and assessment of the inventory by users of the reported information. The transparency of inventories is fundamental for the success of the process for the communication and consideration of information;

**Consistency** means that an inventory is internally consistent in all its elements with inventories of other years. An inventory is consistent if the same methodologies are used for the base and all subsequent years and if consistent data sets are used to estimate emissions or removals from sources or sinks. Under some circumstances, an inventory using different methodologies for different years can be consistent if it has been recalculated in a transparent manner, in accordance with the IPCC good practice guidance;

**Comparability** means that estimates of emissions and removals reported by COP Parties in their inventories are comparable;

**Completeness** means that an inventory covers all sources and sinks, as well as all gases, included in the IPCC Guidelines, as well as other existing relevant source/sink categories which are specific to individual Parties and, therefore, may not be included in the IPCC Guidelines. Completeness also means full geographic coverage of sources and sinks of a Party;

**Accuracy** is a relative measure of the exactness of an emission or removal estimate. Estimates should be accurate in the sense that they are systematically neither over nor under true emissions or removals, as far as can be judged, and that uncertainties are reduced as far as practicable.

NFMS provides all the relevant information for the national GHG-I for forestland remaining forest land, forestland converted to other land use or other land use converted to forestland. All Forest Land in Pakistan is considered as Managed Land. 2006 IPCC Guidelines for National Greenhouse Gas Inventories: Agriculture, Forestry and Other Land Use are to be applied as the methodological reference to ensure consistency with the FREL/FRL developed for 1996-2016. The activity data is sourced from SLMS and the emission/removal factors from NFI. The customised GHG-I training manual is available as attachment to complement IPCC Inventory Software (version 2.54.6396.19217) User Manual Version 2.17.

## 2.7. Methodological Framework for MBIGS

NFMS may integrate data and information that is relevant for other components of the REDD+ information system, such as the Safeguards Information System (SIS) (UNFCCC Decision 1/CP.16, Para 71 d). The following safeguards should be promoted and supported when implementing REDD+ activities (UNFCCC 1/CP.16, Appendix):

- That actions complement or are consistent with the objectives of national forest programmes and relevant international conventions and agreements;
- Transparent and effective national forest governance structures, taking into account national legislation and sovereignty;

- Respect for the knowledge and rights of indigenous peoples and members of local communities, by taking into account relevant international obligations, national circumstances and laws, and noting that the United Nations General Assembly has adopted the United Nations Declaration on the Rights of Indigenous Peoples;
- The full and effective participation of relevant stakeholders, in particular indigenous peoples and local communities, in the actions referred to in paragraphs 70 and 72
- That actions are consistent with the conservation of natural forests and biological diversity, ensuring that the actions referred to in paragraph 70 of this decision are not used for the conversion of natural forests, but are instead used to incentivize the protection and conservation of natural forests and their ecosystem services, and to enhance other social and environmental benefits, taking into account the need for sustainable livelihoods of indigenous peoples and local communities and their interdependence on forests in most countries, reflected in the United Nations Declaration on the Rights of Indigenous Peoples, as well as the International Mother Earth Day.
- Actions to address the risks of reversals;
- Actions to reduce displacement of emissions.

SIS provides a systematic approach for collecting and providing information on how REDD+ safeguards are being addressed and respected throughout REDD+ implementation. The information is to be submitted periodically in national communications to the UNFCCC. SIS is expected to be simple, accessible, inclusive, transparent, auditable, comprehensive and according to national legislation. The first step of the process has been interpreting the Cancun safeguards to be addressed and respected in the context of Pakistan. In the second stage, the institutional arrangements have been outlined. Thirdly, the reporting templates containing qualitative and quantitative indicator contents have been defined.

Pakistan's R-PP (2013) provides a reference to the monitoring needs of Multiple Benefits, Impacts, Governance and Safeguards (MBIGS) of the REDD+ programme implementation as a NFMS function. The tentative list of common MBIGS to be monitored is provided in R-PP (2013). Some forest-type specific MBIGS are to be reported for the REDD+ implementation environments such as silvo-pastoral impacts on forested rangeland, coastal zone protection in mangroves, eco-tourism development in national parks. The MBIGS design has been harmonized with the NFMS data model (Figure 17) and SIS development processes (Climate Law and Policy/Hagler Bailly Pakistan, 2018b) with guidance from the REDD+ Thematic Working Groups. The harmonized MBIGS/SIS indicators to be collected by REDD+ intervention areas and provinces are found in Table 16.

**Table 16. Recommended MBIGS indicators to be collected by REDD+ intervention areas and provinces and labelled by sources.**

Multiple Benefits	Indicators
Sustainable extraction of NTFPs by local communities for subsistence use and small-scale local enterprises	1. Description of non-timber forest products extracted 2. Volume of extracted non-timber products
Increased production of timber in natural forests, potential for lifting or easing of timber ban	3. Production of timber from natural forests by species 4. Growing stock in natural forests by species
Increased production of timber from plantations	5. Production of timber from plantations by species 6. Growing stock in natural forests by species
Changes in natural values, biodiversity, wildlife, potential for eco-tourism	7. General description of activities (and where possible, outcomes) relating to: the identification/valuation of ecosystem services, payment for ecosystem services, alternative livelihood/rural development, eco-tourism 8. Total number of species (plants/wildlife) 9. Proportion of the native tree species of the total tree basal area 10. Amounts disbursed from PES schemes
Desertification control, erosion control, watershed protection, quantity and quality of streams	11. Deserted/eroded area 12. Vulnerable area for hazards 13. Number and area of fires
<b>Impacts</b>	
Socio-economic impacts from participation in forest management, changing forest resource utilization patterns, availability of raw materials for processing	1. Forest related jobs or businesses created 2. Improvement in household income 3. Change in women's disposable income
Resource impacts, including forest development, desertification control, erosion control, watershed protection	4. General description of how natural/untouched forests and biological diversity has been recognized and protected during REDD+ implementation (EIAs developed/implemented), environmental assessment framework followed. 5. Confirmation that no natural/untouched forests have been converted as a result of REDD+ implementation. 6. Natural/untouched forest area before/after REDD+ implementation 7. Number of project proposals granted/refused authorization (percentage) 8. Number of EIAs completed/implemented per province (percentage)
Impact of distribution of benefits on local socio-economic conditions	9. Improved access to social services (health, education, training, credit) 10. Improvement in access to services (education, training, health, credit) in collectively owned/managed forests 11. Improvement in women's access to services (health, education, training, credit)



Governance	
Forest policies, including land tenure, rights to forest resources, carbon rights and policy reform	<ol style="list-style-type: none"> <li>1. General description of the efforts made to recognise, document and enforce forest and land tenure claims including customary claims.</li> <li>2. General description of the efforts made in respecting the rights of native communities and tribal communities in REDD+</li> <li>3. Number of registered rights-holders (before/after implementation)</li> <li>4. Number of unregistered rights-holders areas (before/after implementation)</li> <li>5. Number of tenure related disputes (before/after implementation)</li> <li>6. Number of resettlements (after implementation)</li> <li>7. Number of people from tribal populations present</li> <li>8. Number of collectively owned/managed forests (before/after implementation)</li> <li>9. Number of contested collectively owned/managed forests (before/after implementation)</li> </ol>
Law enforcement	<ol style="list-style-type: none"> <li>10. Number of encroachers</li> <li>11. Number of encroachment cases registered at police</li> <li>12. Number of civil suitcases for encroachment</li> </ol>
Transparency and anti-corruption	<ol style="list-style-type: none"> <li>13. General description of information sharing/dissemination activities undertaken in relation to each strategic option</li> <li>14. Number of awareness-raising workshops held and number of attendees</li> <li>15. Number of requests for information received and number dealt with (percentage rejected and granted) in each province</li> <li>16. Number of appeals lodged in each province</li> <li>17. Average time for dealing with requests/appeals in each province</li> <li>18. Description of procurement processes (consultants, companies) involved in the implementation of each strategy option</li> <li>19. Description of procurement outcomes</li> <li>20. Evidence of how REDD+ finance has been spent (per strategic option based on audited reports)</li> <li>21. Number of corruption-related denunciations lodged/number investigated/prosecuted (percentage)</li> </ol>
Management of the National REDD+ Program, inclusion of stakeholders in consultation and review	<ol style="list-style-type: none"> <li>22. General description of the efforts made to carry out consultations and involve local people in the REDD+ design and implementation process (awareness-raising, types of consultations held)</li> <li>23. Number of meetings held, number of participants per meeting, categories of participants</li> <li>24. Number of views gathered (feedback forms, interviews, votes, minutes recorded and disseminated), per REDD+ intervention area</li> <li>25. General description of the efforts made in identifying and respecting traditional knowledge in REDD+ in Pakistan</li> </ol>

	<p>26. Number of sacred groves/areas in REDD+ intervention areas (before/after implementation), per province</p> <p>27. Evidence of traditional knowledge/practices recognized/integrated into REDD+ implementation (intellectual property, traditional practice protocol)</p> <p>28. General description of any additional measures taken to engage native communities, tribal population and vulnerable groups in REDD+ planning and implementation (culturally appropriate communications and outreach).</p> <p>29. Description of FPIC processes followed where appropriate</p> <p>30. Number of participants from native communities, tribal population and vulnerable groups engaged in consultations (percentage)</p> <p>31. Number of FPIC processes carried out</p> <p>32. Proportion of women involved in REDD+ planning/implementation</p> <p>33. Emission projections</p> <p>34. Emission reductions</p> <p>35. General description on the types of measures to identify and address risks of reversals</p> <p>36. Rates of reversals of emissions</p> <p>37. General description on the types of measures to identify and address risks of leakage of emissions</p> <p>38. Rates of deforestation in neighboring areas before and after the REDD+ intervention implementation</p>
Benefit distribution policies	<p>39. Description of how benefits from REDD+ (monetary and non monetary) are shared (with local populations)</p> <p>40. Description of the efforts made to meaningfully involve women to share in the benefits (monetary and non-monetary)</p> <p>41. Total finance disbursed</p> <p>42. Total finance disbursed collectively to community owned/managed forests</p> <p>43. Proportion of women receiving monetary/non-monetary benefits from REDD+</p>
Conflict resolution mechanisms	<p>44. General description of the types of grievances received in relation to REDD+ by the FRGM and other relevant entities and how they were dealt with</p> <p>45. Number of grievances received</p> <p>46. Number of grievances investigated</p> <p>47. Number of grievances resulting in the establishment of a mediation assembly</p> <p>48. Number of grievances appealed to the courts/unresolved (percentage)</p>

At the beginning, there must be a REDD+ project baseline developed for each MBIGS variable. The NFMS system provides quantitative information regarding the natural/untouched forests, species diversity information and deforestation figures in neighboring areas can be retrieved from forest maps combined with dedicated forest management and biodiversity inventory surveys. The emission projections are derived following the FREL/FRL development processes and reduced emissions are detected with MRV.

The socio-economic baseline can draw on the existing national and provincial monitoring programs (e.g. demographic and social surveys), and leverage both secondary and primary datasets. For socio-economic monitoring at the REDD+ project level, more expensive primary data collection would include extensive household surveys, whereas a less expensive approach is based on the participatory methods at the community level. Methodology to be used for the monitoring process of indicators includes interviews, questionnaires, direct observation and public consultations, whenever necessary.

## 2.8. Methodological Framework for NFMS Web Portal and Data Repository

The NFMS web portal serves as an integrated platform for transparent sharing and access of data to all the participating REDD+ stakeholders and general public.

Steps	Process	Outcome/Design Decisions
<b>Step 1</b>	Assessment of available data, data gaps and potential users	<ul style="list-style-type: none"> <li>Identification of data requirements and potential users</li> </ul>
<b>Step 2</b>	Assessment of institutional capacities and identification of potential institutions (for data ownership, custodianship, system hosting, admin service provider)	<ul style="list-style-type: none"> <li>Institutions/organizations capable of hosting and administering the NFMS system</li> </ul>
<b>Step 3</b>	System Needs Assessment	<ul style="list-style-type: none"> <li>Key informants' consultation for Users' Requirement Assessment for NFMS (Oct – Dec 2017)</li> </ul>
<b>Step 4</b>	System Design and Prototype	<ul style="list-style-type: none"> <li>NFMS System Prototype</li> </ul>
<b>Step 5</b>	Directives for GCISC by MOCC for hosting of NFMS Web Portal	<ul style="list-style-type: none"> <li>National REDD+ Steering Committee Meeting held on 9th April 2018 that decided GCISC as the national organization to host the NFMS</li> </ul>
<b>Step 6</b>	Assessment of available system hardware and infrastructure at GCISC	<ul style="list-style-type: none"> <li>Initial meeting is conducted for specifications</li> <li>The server specifications are evaluated</li> <li>The minimum specifications to run NFMS provided</li> </ul>
<b>Step 7</b>	Development of Data Policy, Sharing Protocol and Modality (Terms and Conditions)	<ul style="list-style-type: none"> <li>Generally open data policy as per new approved Digital Policy except some sensitive information</li> <li>Standard data sharing protocol form is designed with authorized signatures, etc.</li> <li>Data Ownership, Custodianship, Policy and Sharing Document</li> </ul>
<b>Step 8</b>	NFMS Web Portal Deployment and Testing	<ul style="list-style-type: none"> <li>Deployment in GCISC</li> <li>GeoNode Platform on Linux Platform (Choice between CentOS and Ubuntu)</li> <li>Use of open source technologies</li> <li>See attachment (NFMS Web Portal Deployment and Testing Document)</li> </ul>
<b>Step 9</b>	Testing	<ul style="list-style-type: none"> <li>Functional testing</li> <li>Performance testing</li> <li>Compatibility testing</li> <li>Security testing</li> </ul>



		<ul style="list-style-type: none"> <li>▪ Usability testing</li> </ul>
<b>Step 10</b>	Capacity Building	<ul style="list-style-type: none"> <li>▪ As part of O &amp; M (minimum six months after hand over)</li> <li>▪ Various Trainings</li> </ul>
<b>Step 11</b>	Development of Institutionalization and Sustainability Action Plan	<ul style="list-style-type: none"> <li>▪ Establishment of the technical units</li> <li>▪ Setting up of participatory process</li> <li>▪ Clarification of mandates within the technical units</li> <li>▪ Promulgation of institutional arrangements</li> </ul>
<b>Step 12</b>	Transferring of System and Knowledge to MOCC (to GCISC and stakeholders)	<ul style="list-style-type: none"> <li>▪ As part of O &amp; M (minimum six months after hand over)</li> <li>▪ Training on system administration</li> <li>▪ Training on NFMS technologies including GeoNode, etc.</li> <li>▪ Creating dedicated technical (developers) and system administrator positions in the department</li> <li>▪ Running awareness programs</li> </ul>

#### 2.8.1. *System Architecture*

The NFMS Web application contains different server parts built on top of Free and Open Source Software (FOSS) (including GeoServer, database, proxy, map server), open source map handling applications and libraries. The servers are to be placed in a specified and secured place. The server maintenance and upgrade processes need to be defined within data update process. The server system management may be handled through VPN/SSL secured connection. Database data backups need to be taken automatically within regular time periods into a certain store.

Open source map handling is using OpenLayers library, which makes it easy to setup dynamic map in the web page. It can display map tiles, vector data and points loaded from the dedicated database. OpenLayers has been developed to further the use of geographic information. The reporting part may handle the pre-defined report forms and report export format.

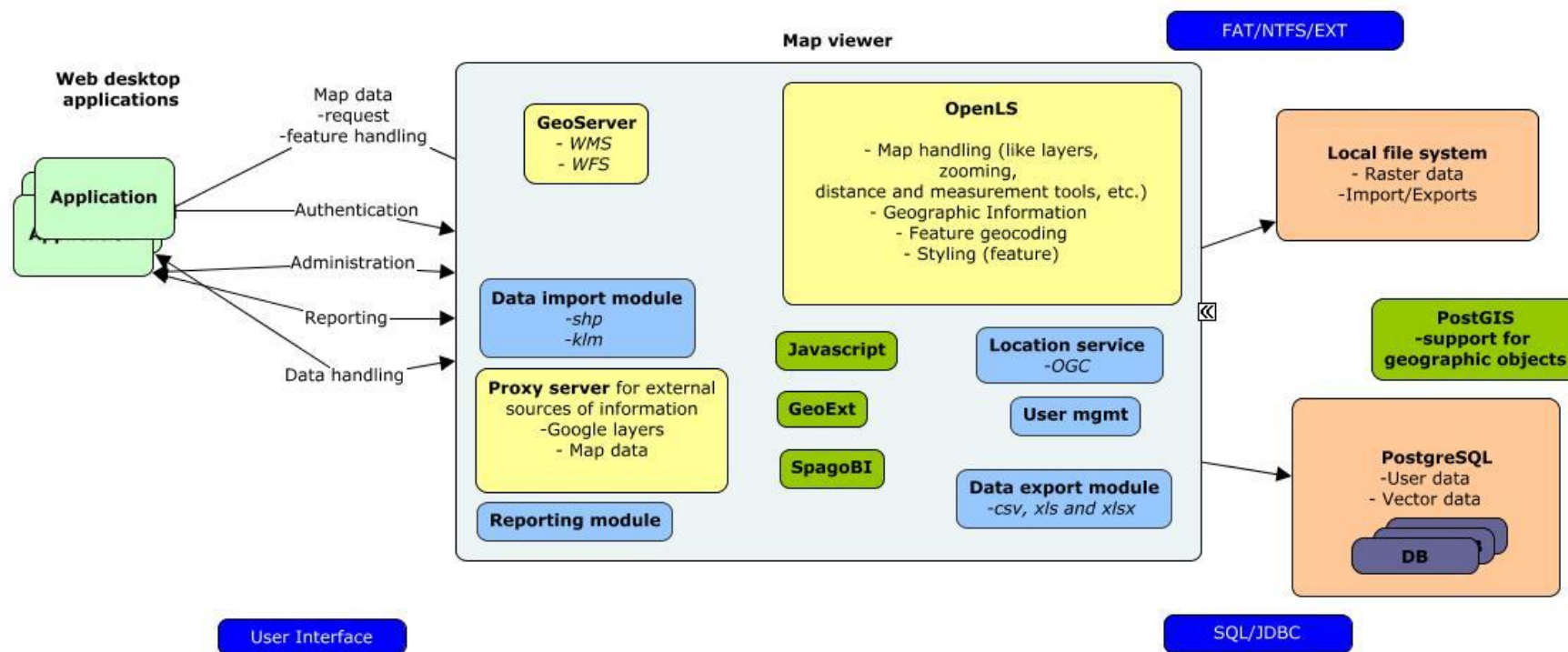


Figure 16 NFMS System Architecture







### 2.8.2. System Components

The NFMS platform is developed on top of the open source geospatial content management system platform GeoNode<sup>22</sup> containing GeoServer as a map server, PostgreSQL/PostGIS as spatial database backend, Geotools as java libraries to provide GIS functionalities and other components (Figure 18 and Figure 19)

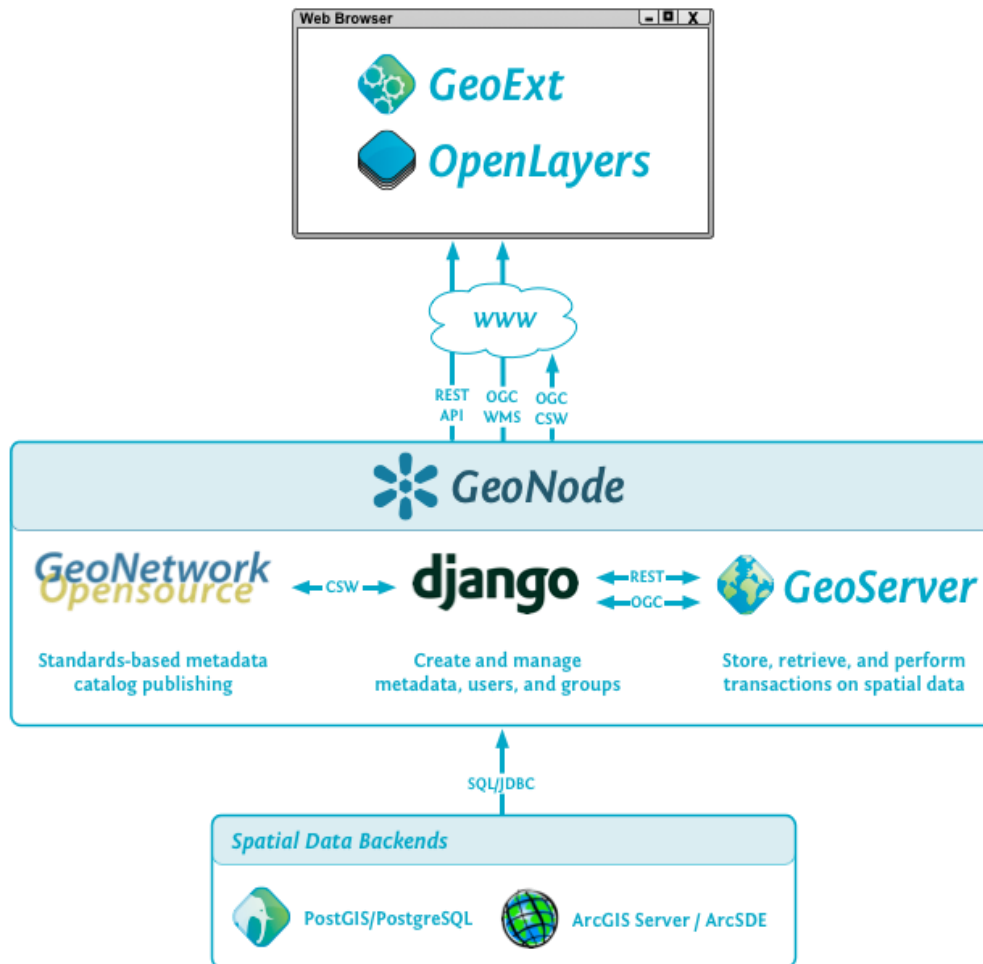
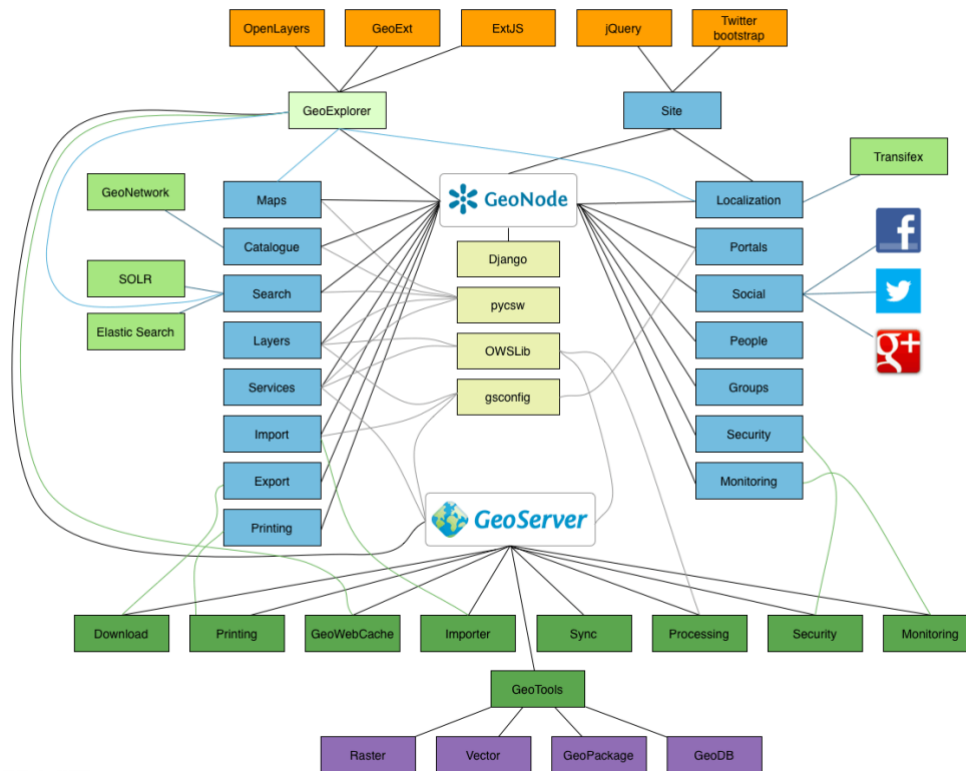


Figure 18 GeoNode high level architecture

<sup>22</sup> <http://geonode.org/>

**GeoNode Component Architecture**



SS / Tue Aug 21 2012

**Figure 19 GeoNode Component Architecture**

The NFMS GeoNode system architecture contains the following components:

### **Django**

Django<sup>23</sup> is a Python based web framework on top of which GeoNode has been developed. The main objective of Django is to facilitate the creation of complex sites-oriented databases. Django emphasizes reusability, rapid development and is used for configurations settings, files, and data models.

### **PostgreSQL/PostGIS**

PostgreSQL is an open source object-relational database system. PostgreSQL is known for its proven reliability, feature robustness, and performance. In PostgreSQL one can define its own data types and build custom functions. PostgreSQL PostGIS extension is the backbone of GeoNode and stores all spatial data. PostGIS is described in the next section while details can be viewed at: <https://www.postgresql.org/>

PostGIS is a spatial extension of the PostgreSQL database management system. This is a well-known open source project for storing and querying geographical entities. PostGIS is fully compliant with OGC standards such as Simple Feature Specifications (SFS) for SQL. PostGIS is the main spatial database supported by GeoNode. The details can be viewed at: <https://postgis.net/>

### **GeoTools**

GeoTools<sup>24</sup> is an open source Java library that provides advanced GIS functionalities. It supports vector and raster geospatial data formats, DBMS access and rendering of complex maps. Being one of the oldest projects of Open Geospatial Foundation, it is fully compliant with

<sup>23</sup> <https://www.djangoproject.com/>

<sup>24</sup> <http://www.geotools.org/>

OGC specifications including GML, WMS, WFS, grid coverage, coordinate transformation and SLD. GeoTools is one of the power libraries used in GeoNode.

### **GeoServer**

GeoServer<sup>25</sup> is a popular open source GIS project. It has a web administration tool to configure its spatial and non-spatial options. Apart from WMS, WCS and WFS, it additionally supports the editing of feature services on the client side using WFS-transactional. GeoServer is built on Java technology and runs on an integrated Jetty web server. It heavily relies on GeoTools already covered. All the GeoNode data is published through GeoServer.

### **GeoWebCache**

GeoWebCache<sup>26</sup> is a Java web application used to cache map tiles coming from a variety of sources such as WMS. It implements other standards including WMS-C, WMTS, TMS, Google Maps KML and Virtual Earth in order to accelerate and optimize map image delivery. It can also recombine tiles to work with regular WMS clients. GeoWebCache is an integral part of GeoNode.

### **Mapfish Printing Module**

MapFish Print<sup>27</sup> allows printing maps as PDFs. This is written in Java. It is typically executed as a servlet in a servlet container for example, Apache Tomcat. MapFish Print is released under the GPLv3 license.

### **OpenLayers**

OpenLayers<sup>28</sup> is a JavaScript library for displaying spatial data in web browsers, without server-side dependencies. OpenLayers implements a JavaScript API for building rich web-based geographic applications, constituting the main open source alternative to the equivalent commercial tools. As with many open source geospatial technologies, OpenLayers implements industry-standard methods for geographic data access, such as the WMS and WFS.

### **GeoExt**

GeoExt<sup>29</sup> is a combination of OpenLayers (discussed above) and Ext JS. Ext JS is a cross-browser JavaScript library for building web interfaces. It includes a set of user interface widgets, an extensible component model and an API. The Ext JS library and its related products have experienced success recently, becoming ubiquitous in complex web applications. The library is currently used by several major international corporations for intranet and internet websites. Ext JS can work as a standalone library and can integrate with the Prototype Javascript library. The work has been extended by a project called GeoExt which embeds OpenLayers with Ext JS to provide a framework to build desktop-like web GIS applications.

The additional components which help build GeoNode together are as follows:

- GXP
- gsconfig.py
- owslib
- django-registration
- django-avatar
- South

---

<sup>25</sup> <http://geoserver.org/>

<sup>26</sup> <http://geowebcache.org/>

<sup>27</sup> <http://www.mapfish.org>

<sup>28</sup> <https://openlayers.org>

<sup>29</sup> <http://geoext.org/>



Following tools are used to build GeoNode:

- Paver
- Maven
- Git
- Bash

### 2.8.3. *User interface*

User will be authenticated during the login into system (Figure 20). This will check the user role and his/her feature permissions for the different views or modifications. User could update the data or just view some of them according his/her permissions (Figure 21).

Expert or system owner can administrate the system at back-end to update data and define statistics through a web GUI (version control management rights). User can share maps and reports.

Expert or system owner can fetch forest information by compartment level, or by any geographical boundaries up to provincial and national level. User can aggregate statistics and generate charts using an XML document as statistic definition. User can compare sub-national results to national. User can compare past results to new.

Expert and generic user may view time series datasets. User can scroll LULUCF maps and background satellite imagery in a timeline to produce situational picture of wanted point in time.

System is built to be open for storing LU maps for subsequent time points (underlying remote sensing data stored externally).

### 2.8.4. *Information contents*

The following information content is defined for the web-portal data repository:

- Standard methodology for FREL/ FRL development including uncertainty assessment
- Forest definition
- Definition for significant pools and GHGs
- Sub-categories/ classes of the IPCC-recommended six land cover categories
- Definition of reference period
- Emission factors
- Forest compartment boundaries
- Admin boundaries (national and sub-national)
- Biophysical boundaries (ecological zones)
- REDD+ project area boundaries
- Forest owner boundaries
- NFI plot-level data
- Land use and cover maps
- Activity data maps
- Spatial deforestation, degradation and carbon stock enhancement maps and statistics by provinces
- MBIGS data for the REDD+ implementation areas
- A link to the carbon registry interface for the registered projects and claimed and attributed emission reduction units.

### 2.8.5. User management (permission)

User management roles:

- a. Superuser (if needed)
  - Giving access rights to admin (handle admin accounts) (at MOCC/NCCA<sup>30</sup>)
- b. Expert (1 in MOCC and 1 appointed at time from each province/territory, total 1+7)
  - Uploading the map layer data
  - Editing feature attributes
  - May modify defined features
  - Styling features
  - Data access handling
  - User accounts (create user, activate/deactivate accounts)
  - Creating reports
- c. Normal user
  - Viewing, adding own features
  - Modifying own feature attributes
  - Seeing his/her own reports
- d. Guest
  - Limited content view / limited data access / no modification access

### 2.8.6. Uploading and updating interface

- a. Vectors (in DB) and rasters (in Geoserver) map layer data maintaining by Admin. Loading vector data (.shp ESRI format files) through data import module
- b. Loading measured, updated data via .CSV or .XLS data into database
  - WMS interface (may be tiled in Geoserver)
  - WFS interface (feature attributes)
- c. Items (like points and areas) with geometries are stored in database

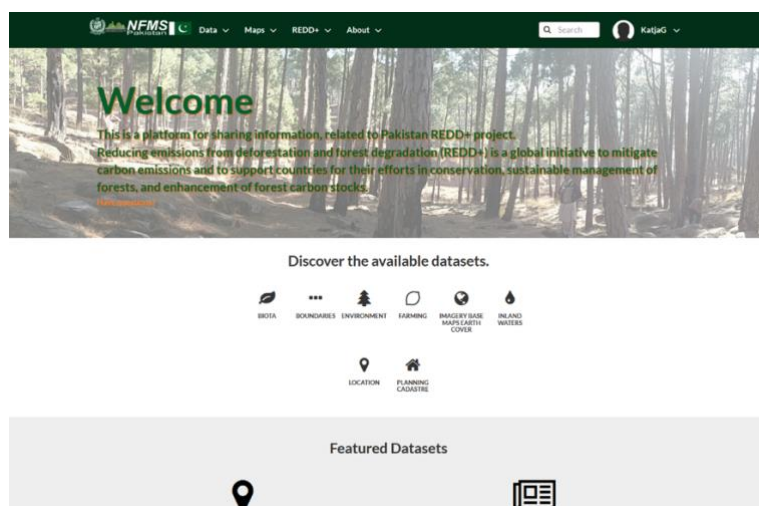


Figure 20 NFMS Web Application Interface

<sup>30</sup> The functions of the NRO will be taken over by the Pakistan Climate Change Authority established under Section 5 of the Climate Change Act, 2017.

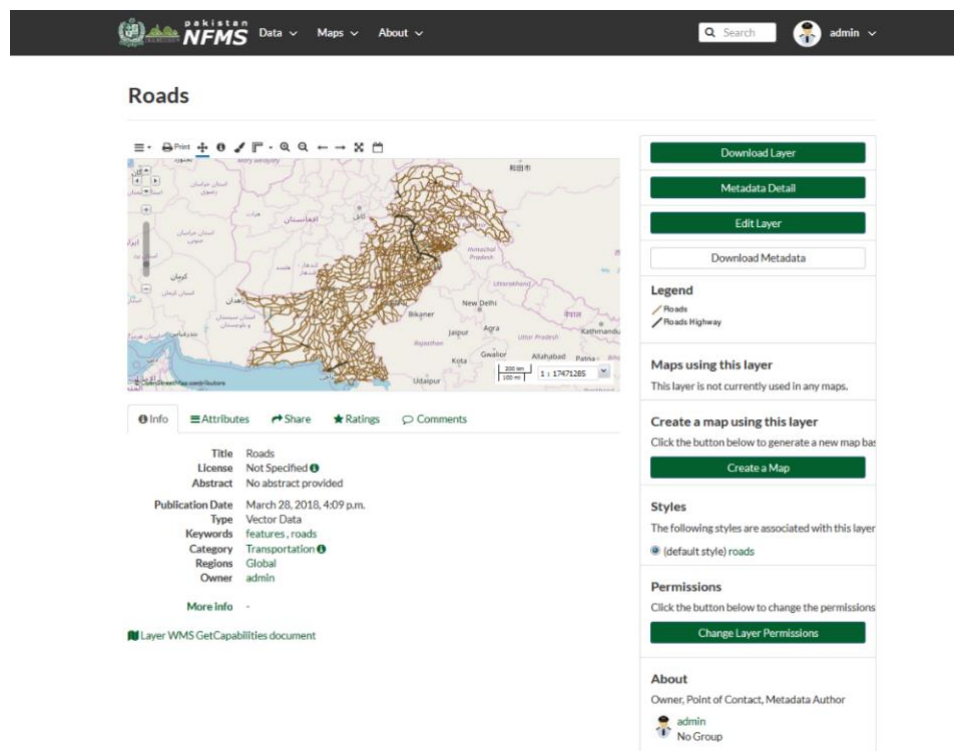
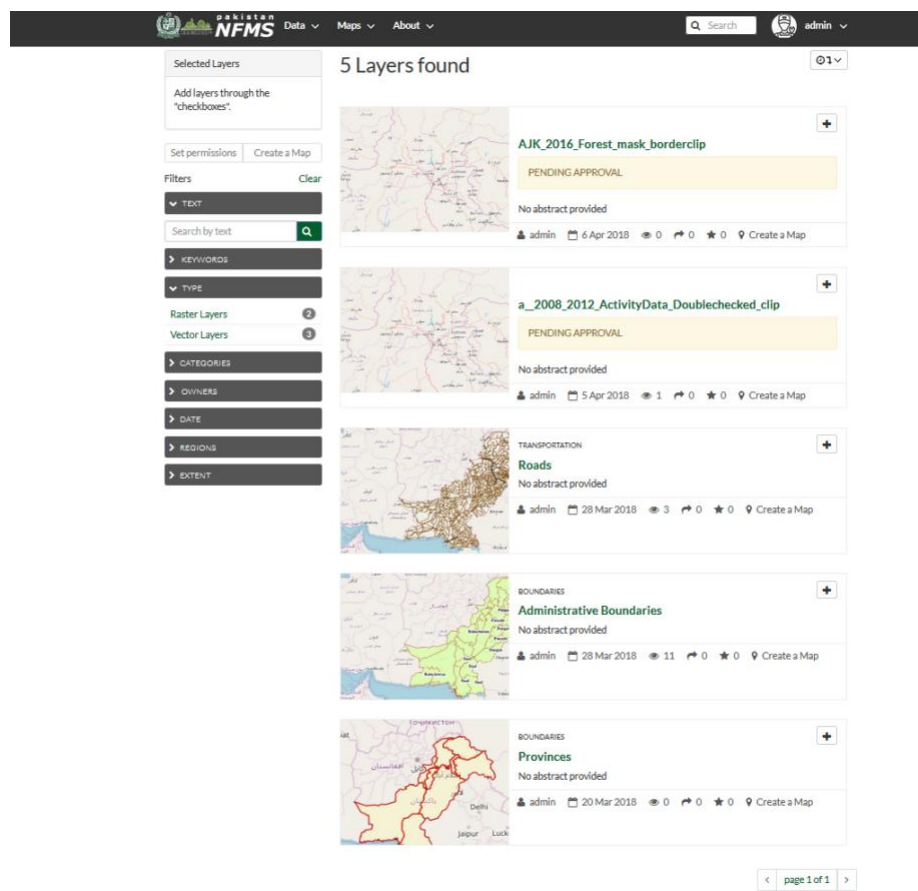


Figure 21 Spatial Layer Search and Metadata Interface



## 3. OPERATION AND INSTITUTIONALIZATION OF NFMS

### 3.1. Data Ownership, Custodianship and Sharing Agreement

There are the following considerations as per scope of NFMS:

- i. Primary NFMS data ownership will be retained by the Provincial Governments. MOCC will be the custodian through GCISC (until NCCA<sup>31</sup> is established in MOCC). The Provincial REDD+ Units are provided with the mandate to collect, manage and disseminate the NFMS data pertinent to their own provincial territories.
- ii. GCISC is a dedicated research institute for climate change studies in Pakistan. GCISC has the physical infrastructure to host NFMS with the National Steering Committee Meeting decision taken in April 2018. A data centre within MOCC is recommended to be established to manage NFMS data and to further regulate data dissemination.
- iii. GCISC must establish a data division with a dedicated officer who is the first point of contact in case of any data related queries in coordination with the provincial REDD+ units. There are subsequent levels up in the hierarchy for example, Chief Information Officer, where the data request will be forwarded for final approval.
- iv. Data Custodianship will be kept by MOCC through GCISC. Data Custodian will have technical role to ensure that deployed NFMS will have proper authorized data access. Furthermore, NCCA will coordinate ensuring data quality and update related issues in coordination with the Provincial REDD+ units.
- v. An online data form request is to be developed and placed on the web portal for various users including communities, commercial entities, research organizations, academicians, NGOs and INGOs.
  - a. In all cases generic data agreement will be signed (template in Chapter 3.2).
  - b. In case where sensitive data is requested by any individual or commercial entity, there will be additional scrutiny such as verification from state institutions such as Securities & Exchange Commission of Pakistan (SECP), PSEB and FBR (Federal Board of Revenue). In some cases, registration with Survey of Pakistan (SOP) may also be verified.
- vi. The form is used to enquire the basic introductory information and will show all the data products as drop-down menus. The product categories can be (but not limited) as following:
  - a. SLMS data
    - i. LULC (6 categories)
    - ii. Maps with different resolution data
  - b. Activity data
    - i. Deforestation
    - ii. Forest degradation
    - iii. Conservation of forest carbon stocks
    - iv. Sustainable forest management
    - v. Enhancement of forest carbon stocks (restoration/afforestation/reforestation)
  - c. NFI data
    - i. NFI plot-wise variables for temporary plots (Sensitive Data)
    - ii. NFI plot-wise variables for permanent plots (Sensitive Data)
  - d. GHG-I (attach Annexure for more details)
  - e. Forest Management Data from Forest Compartments
    - i. Forest Classification
    - ii. Boundary Pillar
    - iii. Sample Plot
    - iv. Plantation areas and species
    - v. Drivers of deforestation and forest degradation

<sup>31</sup> The functions of the NRO will be taken over by the Pakistan Climate Change Authority established under Section 5 of the Climate Change Act, 2017.

The above-mentioned data is further classified into public and restricted access. Accordingly, there will be a data protocol which will be shared and signed between the requestor and the data owner (MOCC through GCISC in this case).

- vii. All the data can be selected through map coverage option on the map. This option can be developed as part of data request portal development where an area on the map can be selected and the required data can be downloaded online, or a request is received to data unit who can process the data and send through DVD/CD.
- viii. The above datasets can be provided into desired GIS (vector and raster) and non-GIS formats (CSV, Excel and PDF, etc.).
- ix. In case of online data access, OGC web services can be used and data may be provided as WMS, WFS and WCS depending on the type and usage.
- x. The form will have a Frequently Asked Questions (FAQ) section which will facilitate end users to answer different queries.
- xi. There will be terms and conditions (see Terms and Conditions) which will be uploaded to NFMS web portal.
- xii. As per Digital Pakistan Policy 2017 by Ministry of Information Technology, the overall vision of Digital Pakistan Policy is:
  - a. To become a strategic enabler for an accelerated digitization eco system to expand the knowledge-based economy and spur socio economic growth.
  - b. Goal No VII says to **improve the provision of data** to the international rating agencies.
- xiii. Following clauses support overall data sharing protocols which equally fit to NFMS:
  - a. **2.4.** Promote an **open digitization infrastructure for shared services** including cloud technologies to achieve synergies and economies of scale in both the public and private sectors.
  - b. **8.1.** Enhance the skills and capabilities within government to evaluate **open source ICT products and services** as an option.
  - c. **8.2.** Ensure fair consideration of both types of software i.e. **open source** and proprietary during the procurement process. Government IT initiatives should make assessments and cost-benefit and security analysis to determine most appropriate action for each project.
  - d. **8.3.** Encourage **R&D of “Open Source”** across the country through appropriate means.
  - e. **17.4** Accelerate adoption of IoT, FinTech, Artificial Intelligence & Robotics and enable cost-effective introduction of new technologies, including **open standards efforts**, targeted federal funding, and impactful public-private partnerships.

As per round-table conference on GIS in physical planning, resource management, governance and business: the need for a national GIS policy and infrastructure (NSDI-national spatial data infrastructure), organized by Planning Commission of Pakistan, following recommendations support the hosting of NFMS:

- a. Distribution, dissemination and sharing of GIS data has many constraints and issues; national security, data ownership, intellectual property rights, personal and business confidentiality, and technical infrastructure among many. A National GIS Policy is required to sort out the afore-mentioned issues and lay foundations for an effective GIS data sharing infrastructure. Survey of Pakistan, under current legislation, has been mandated to establish a NSDI (National Spatial Data Infrastructure). Possibilities of a collaborative effort and structure involving users in this respect are to be evaluated.
- b. Development of National Spatial Data Infrastructure (NSDI) and **dissemination of GIS data** for government, public, academia and civil Society.
- c. A GIS data sharing mechanism and framework would be developed especially where public funding and government institutions are involved.

### 3.2. Data Policy and Sharing Protocol

#### ***Recommended Description of Data to Be Shared***

Upon written consent to the following conditions and restrictions, GCISC-MOCC (hereinafter referred to as the "Owner") will provide the National Forest Data in several formats (such as vector, raster and/or tabular) specified below, as requested (and as available), to the following party: **[PARTY NAME], [whose principal place of residence is at / a [CORPORATE JURISDICTION]]** (hereinafter referred to as the "User")

***Purpose of Data Sharing.*** The parties are entering into this agreement, and GCISC-MOCC is granting [PARTY] access to the Data (defined in section [DESCRIPTION OF DATA]), for the purpose of [INSERT SHORT DESCRIPTION OF PURPOSE OF THE DATA USE] (the "Purpose").

#### ***License Grant to Use Data.***

The Owner hereby grants to the User a limited, non-exclusive, non-transferable, and revocable license to access, copy, and use the Data (the "[DELIVERABLE]").

The data provided by the Owner are solely for the User's internal use in the conduct of its daily business affairs.

None of the data provided may be reproduced or redistributed without the Owner's prior written permission. This limitation, however, is not intended to restrict the User's distribution of printed map information created from the data.

Access to the data provided by the Owner shall be exclusively for the User and employees of the User. The term "employee" shall mean any person directly employed on a full-time or part-time basis by the User. The term "employee" shall also be construed to mean any contractor, consultant or any similar person or entity hired by the User for a limited purpose.

The User shall require any third-party contractor hired to perform work that utilizes the subject data to agree not to use, reproduce or redistribute the data for any purpose other than indicated in the applicable contract. All copies of the data used by a third-party contractor must be returned to the User upon contract work completion. The provisions of this paragraph shall apply in equal force to any independent contractor the User may choose to employ. The User shall provide any third-party contractor with a copy of this signed agreement and the GCISC-MOCC Data Distribution Policy.

As per GCISC-MOCC Data Distribution Policy, there are two types of clauses. One is public data which is also open while the other is restricted. The NFMS datasets can be classified as public and restricted.

#### ***Liabilities and Limitations for the Accuracy of Data Provided***

By signing this Agreement, the User shall become contractually bound to all provisions stated in this Agreement.

Although the owner has verified the data to the best of its ability, the owner makes no representations of any kind as to its completeness or accuracy; nor does it guarantee the complete merchantability or fitness for a particular use, nor are such warranties to be implied, with respect to the data provided under this Agreement.

The User is responsible for understanding the accuracy limitations of the data provided. In particular, alterations and/or manipulation of the original data may adversely affect their accuracy, meaning and design integrity.

To assist in the proper utilization of the data, metadata files are provided, if available. The User, however, assumes all responsibility for the correct use of the data provided and for their interpretation.

The User agrees to hold the Owner, their employees and agents harmless from any claim, suit or proceeding arising out of the use of the data in accordance with this agreement, including



indemnification of the Owner and the Government of Pakistan for reasonable expenses incurred in defending such claims.

***Production of Printed or Digital Maps/Reports/Publication Products Using Digital Data Provided***

The User may reproduce the data in the form of printed products, provided the User abides by this agreement.

Any printed maps, reports or publications created using the data provided by the Owner shall give credit to the primary data owners by using the following statement/disclaimer:

“This [map/report/publication] was created using digital data provided by [Primary Data Source] to the National Forest Monitoring System hosted at GCISC-MOCC. This is a secondary product and has not been verified and is not sanctioned by MOCC.”

The User may not publish the data on any website without written permission from MOCC.

***Sharing of the Provided Digital Data with Other Persons or Entities***

If at any time during the course of this Agreement, the User determines that it is necessary to share portions of the data with a person or entity not employed by the User as a consultant, contractor or any similar person or entity for a limited purpose, the User shall first request permission from the GCISC-MOCC before sharing any portion of the data, unless otherwise committed by this Agreement or as required by law. Any such request shall be in writing to the GCISC-MOCC and shall specify the persons or entities the User wishes to share the data with and the reasons why such sharing of the information is necessary. Permission for the User to share the data provided with other parties shall not be unreasonably withheld if such sharing of the information is necessary to further legitimate governmental purposes. Commercial or revenue-generating uses of the data shall not be considered a legitimate purpose until allowed by GCISC-MOCC.

The undersigned hereby accepts and agrees to be bound by the terms and conditions set forth in the Data Sharing Policy attached hereto and made part of this agreement. It is fully understood that pursuant to this agreement, the undersigned is permitted to utilize digital information provided by GCISC-MOCC, solely in the conduct of its own daily business affairs. Any other use, unless with prior written permission from GCISC-MOCC, shall be deemed unauthorized and punishable by law.

GCISC-MOCC makes no representations of any kind, including but not limited to, the warranties of merchantability or fitness for a particular use, nor are any such warranties to be implied, with respect to data furnished hereunder. GCISC-MOCC assumes no responsibility to maintain them in any manner or form.

I have the authority to legally obligate the User to the terms of this agreement:

NAME \_\_\_\_\_

SIGNED \_\_\_\_\_

TITLE \_\_\_\_\_

DATE \_\_\_\_\_

### 3.3. Terms and Conditions on using NFMS Web Portal

#### ***NFMS Terms of Service***

This Agreement was last modified on May 13, 2018.

The NFMS Data Repository is provided as a service for the purpose of facilitating GIS data sharing between different national and provincial stakeholders.

Please read these Terms of Service completely and carefully. This page documents the terms and conditions attached to the use of the geospatial data repository in any way at [e.g. [www.nfms-pakistan.org](http://www.nfms-pakistan.org)]

By using or accessing the spatial data repository in any way, viewing or browsing the content, or adding your own content to the repository, you are agreeing to be bound by these Terms of Service.

#### ***Format***

GIS data can be uploaded in ESRI shapefile or geoTIFF format unless otherwise specified. Datasets will be compatible with all standard GIS platforms. If GIS software is not available it is recommended to use a free GIS viewer, such as Quantum GIS.

#### ***Instructions for Use***

- GIS data or maps and tabular data derived from GIS data acquired from the GIS Data Repository may be used in publications and presentations, provided that credit is given to the data provider listed in the related metadata.
- If you are a registered user of the NFMS at “url”, you shall maintain accurate user account information concerning your identity including your first and last name and e-mail address.
- If you are a registered user of the NFMS at “url”, you acknowledge and agree that e-mail is an acceptable means of communication with you, and you agree to accept e-mails from either admin email + website and shall not block e-mails originating from these sources.

#### ***Restrictions***

- Access to data posted does not constitute a transfer of any ownership or interest in the GIS data.
- All the relevant stakeholders shall use the GIS data exclusively for intended use.
- In order to maintain data quality and consistency, and avoid any legal consequences regarding data, the user agrees that GIS data will not be transferred, sold, or otherwise made available to a 3<sup>rd</sup> party without the expressed written permission of original owner of data or paid acquisition of GIS data.

### ***Termination***

As a condition of your use of the NFMS, you will not use the NFMS for any purpose that is unlawful or prohibited by these terms and conditions. You may not use the NFMS in any manner that could disable or overburden the server or interfere with any other party's use of the Repository. You may not attempt to gain unauthorized access to any services, other accounts through hacking, password mining or any other means. You may not obtain or attempt to obtain any materials or information through any means not intentionally made available through the Repository. In any such case the MOCC reserves the right to terminate your account or remove any unauthenticated data from site, without any advance notice. User will be notified after removal through e-mail.

### ***Changes to This Agreement***

MOCC reserves the right to modify these Terms of Service at any time. We do so by posting and drawing attention to the updated terms on the Site and by highlighting them under Announcements tab. Your decision to continue to visit and make use of the Site after such changes have been made constitutes your formal acceptance of the new Terms of Service.

Therefore, we ask that you check and review these Terms for such changes on an occasional basis.



## 4. NFMS FUNDING ARRANGEMENTS

It is critical to carry out a detailed assessment of the funding available and needed to ensure the long-term sustainability of the NFMS. The funding analysis will serve as a domestic tool to support requests for national government funding and as a tool for requesting international support on specific work areas.

To the extent that REDD+ mechanism would result in results-based payments, thought should be given to ensure the self-financing of the NFMS and the fair allocation of available funds (to the different technical units, equipment maintenance, security of jobs, staff training, etc.). The funding allocation mechanism for operating and maintaining the NFMS are to be discussed with all relevant stakeholders.

Pakistan needs to develop progressively and operationalize the three pillars of the NFMS-MRV, namely SLMS, NFI and GHG-I over the three phases of REDD+. The REDD+ readiness activities (Phase I) are being completed and the country is moving to the REDD+ implementation (Phase II). By the third phase of REDD+, Pakistan must have a fully functional NFMS-MRV system to achieve funding from the performance-based funding schemes.

R-PP (2013) provides projected features and capacity for the major NFMS elements. The following sub-chapters provide the summarized assessment of which activities, development and resources are needed to proceed from the readiness phase (1) producing the NFMS design towards the REDD+ implementation phase (2) in the short-term.

### 4.1. Satellite Land Monitoring Systems

Current (Phase 1)	Short-term objective (Phase 2)	Long-term objective (Phase 3)
Institutional framework decided.  SLMS methodology standard is prepared, consulted and trained at national level.	Active participation in national land use categorization	Periodic re-assessment of Forest Land sub-classification
Land use and cover maps for 1996, 2000, 2004, 2008, 2012 and 2016 with 6 IPCC classes	Full sub-classification on Forest Land, using IPCC Approach 3	Full assessment of Forest Land sub-category transfers.  Land use and cover mapping repeated every 4 years
Deforestation and forest degradation assessment conducted with reported climate zone and provincial results for 1996-2000, 2000-2004, 2004-2008, 2008-2012, 2012-2016	Sampling approach based on high-resolution optical satellite imagery to assess degradation, specifically in relation to field data collection in relevant areas	Sampling approach as before, focusing on hotspots that have been identified from previous assessments.

**Activities:**

- Land use and cover mapping next time by 2020

**Resources:**

- 2 GIS and Remote Sensing Experts trained for the SLMS standard protocols in each FD
- VHR data for more detailed change assessments and degradation assessment by forest type

It is recommended to have 1 dedicated forest inventory expert (supervisor level qualifications) and 2 dedicated GIS experts as full-time employees to prepare and coordinate the provincial forest inventory and mapping campaigns. Besides there is a need for temporary NFMS staff members to assist inventories and mapping tasks. These temporary staff members can be acquired through relocations within the forest departments or they can be sourced from outside. The number of needed persons depend on the desired schedule of activities. The desired training outlines is presented in the capacity-building report.

**4.2. National Forest Inventory**

Current (Phase 1)	Short-term objective (Phase 2)	Long-term objective (Phase 3)
The NFI designed and measurement protocol defined. The national forest inventory design also covers lands of the state and non-state forest owners.	Fully operational in most state-owned forests for major forest types.  Support for implementation by non-state forest owners.	Fully operational in all state-owned forests.  Protocols developed and operational for all forest types. Implemented by non-state forest owners country wide.

**Activities:**

- NFI permanent sample plots remeasured by 2021, and every 3 years Temporary sampling plots measured with intensified sampling intensity (i.e. 5'x5', 2.5'x2.5', 1.25'x1.25) for specific forest types under interest
- Allometric equation development for the main species by forest types

**Resources:**

- Inventory team leader supported by two GIS and remote sensing officers (see SLMS) in each FD
- Research team to carry out research for allometric equations

### 4.3. National GHG Inventory and reporting

Current (Phase 1)	Short-term objective (Phase 2)	Long-term objective (Phase 3)
Emission/removal factors have been developed based on pilot NFI inventory by climate zones and provinces	Key category assessment for carbon pools completed for major forest types.  Emission factors for use outside of state-owned forests developed for major forest types.	Key category assessment for carbon pools completed for all forest types.  Emission factors for use outside of state-owned forests developed for all forest types.
FREL/FRL has been developed for 1996-2016	Carbon stock estimation where data supports it.	Carbon stock estimation in all forests and assessment against applicable FREL or FRL to establish performance.
FREL/FRL data included forest cover changes available for 1996-2016  The forest sector emission and removal factor data are stored in NFMS to be used in the next report.	Activity data reported on the basis of land use categorization.  Emission factors derived for major forest types.	Activity data reported on the basis of land use categorization.  Emission factors derived for all forest types.  NFMS will generate full report on reduced emissions and enhanced removals on Forest Land.

#### Activities (national level):

- Updating the national emission and removal factors
- Combining the activity data and emission data for 2020
- Independent verification of the field reference data
- Uncertainty assessment

#### Resources:

- One officer appointed by MOCC/NCCA

### 4.4. REDD+ Monitoring

Current (Phase 1)	Short-term objective (Phase 2)	Long-term objective (Phase 3)
No systematic monitoring for fuelwood and timber harvesting	Internal displacement of emissions within the forestry sector assessed from field data on forest degradation (e.g. fuelwood, timber), specifically in conditions of forest degradation.	All Forest Land is monitored by the NFMS so there is no domestic leakage within the forestry sector. Cross-sectoral domestic leakage (e.g. with energy sector) assessed at the national level. International leakage assessed through external studies for which



		NFMS data will be made available.
Carbon registry allows registering the projects and monitoring interventions using NFMS	Where data is available from REDD+ projects, effectiveness of intervention strategies under specific environmental conditions is evaluated.	All strategies and interventions are assessed for their effectiveness and performance, with due regard to environmental conditions.
NFMS designed to monitor effectiveness of NRP interventions	All NRP strategies and interventions are assessed for their effectiveness and performance, with specific reference to the degree by which those interventions contribute to the achievement of policies. This explicitly includes assessment of the impacts of benefit distribution strategies.	Where data is available, effectiveness of NRP interventions is evaluated, with specific reference to the degree by which those interventions contribute to the achievement of policies.

**Activities:**

- Systematic monitoring of drivers of deforestation and forest degradation, and the causes behind them
- Monitoring sustainable forestry and carbon stock enhancement activities
- Spatial assessment for reduced emissions, potential displacement or leakage
- Analysis for the effectiveness and performance of the REDD+ strategies and intervention

**Resources:**

- Provincial forest management information systems as sources for forest management data
- Analysis supported by a GIS expert (see SLMS) at provincial and national level
- REDD+ Thematic Working Groups to review the national strategies and interventions

#### 4.5. MBIGS/SIS

Current (Phase 1)	Short-term objective (Phase 2)	Long-term objective (Phase 3)
The SIS/MBIGS institutional framework and indicators linked with the NFMS system design	Safeguards are integrated into the design of the NFMS and supported according to the level of development of the NFMS.	All safeguards based on resource data and NRP participation supported by the NFMS.

**Activities:**

- Data collection in REDD+ implementation areas and forest compartments
- Compilation of secondary source data
- Preparing provincial reports
- Aggregation of the reports at the national level

**Resources:**

- Forest guards at FD to collect data in field
- Provincial REDD+ focal points
- MBIGS/SIS expert at MOCC/NCCA

**4.6. NFMS Webportal**

Current (Phase 1)	Short-term objective (Phase 2)	Long-term objective (Phase 3)
NFMS web portal have been developed and installed at GCISC for providing data access to stakeholders and general public	Non-state implementers of REDD+ projects have access to the NFMS for managing their forest resource data. General public will have access to overview data, with detail down to the lowest possible level while still maintaining confidentiality for forest owners and project implementers.	Non-state implementers of REDD+ projects have access to the NFMS for managing their forest resource data. Access to special users (e.g. research) granted on an individual basis. General public will have access to overview data, with detail down to the lowest possible level while still maintaining confidentiality for forest owners and project implementers.

**Activities:***Operations*

- Updating the data repository with the data from provinces and other sources
- Responses to any data related queries in coordination with the provincial REDD+ units
- Ensuring Standard Operational Procedures are being followed
- Data User Access Control at provincial and federal levels
- Detailed Training Manuals for end-users as well as technical users
- Implementation of Partnership Agreements/Modality
- User training events, awareness seminars across the country

*Technical Backend Support*

- NFMS handling including software source codes and design for future customization as per the need
- Complete hardware maintenance plan
- Fixing bugs on live data feed
- Dedicated onsite and offsite support
- NFMS Scalability with more data coming in to make it sustainable
- To prepare NFMS to fit with National Spatial Data Infrastructure (NSDI)
- To add the additional modules in NFMS as per long term goals of REDD+

**Resources:**

- One data administrator to handle the data requests and data exchanges
- Chief data officer to support the activities
- External system consultant for maintenance and development support

## 5. References

- Climate Law and Policy/Hagler Bailly Pakistan, 2018a. *Framework for Design of a Safeguard Information System in Pakistan (Draft May 2018)*. MOCC/National REDD+ Office. Unpublished.
- Climate Law and Policy/Hagler Bailly Pakistan, 2018b. *Identification of SIS Information Needs (Draft May 2018)*. MOCC/National REDD+ Office. Unpublished.
- FAO, 2016. *Map Accuracy Assessment and Area Estimation: A Practical Guide*. Food and Agriculture Organization of the United Nations. Rome. No.46/E
- Government of Pakistan, 2013. *Readiness Preparation Proposal (R-PP) for Pakistan*. In: Government of Pakistan Ministry of Climate Change
- Government of Pakistan, 2015. *Action Plan for the Implementation of the National Forest Monitoring System of Pakistan*. Ministry of Climate Change, Government of Pakistan.
- Hussain, K.; Khan, M.I.; Afrasiyab, M., 2016. *Capacity Based Need Assessment: National Forest Monitoring System (NFMS) for REDD+ in Pakistan*. Ministry of Climate Change/WWF Pakistan/UN-REDD.
- Intergovernmental Panel on Climate Change, 2006. *2006 IPCC Guidelines for National Greenhouse Gas Inventories: Agriculture, Forestry and Other Land Use*.
- Intergovernmental Panel on Climate Change, 2003. *Good Practice Guidance for Land Use Land-Use Change and Forestry*.
- Intergovernmental Panel on Climate Change, 2003b. *Definitions and Methodological Options to Inventory Emissions from Direct Human-induced Degradation of Forests and Devegetation of Other Vegetation Types*.
- Intergovernmental Panel on Climate Change, 1997. *Revised 1996 IPCC Guidelines for National Greenhouse Gas Inventories*.
- Law, K.; Nichol, J., 2004. Topographic correction for differential illumination effects on IKONOS satellite imagery. *Int. Arch. Photogramm. Remote Sens. Spat. Inform. Sci*, 35, 641-646
- Mehtätalo, L.; de-Miguel, S.; Gregoire, T.G, 2015. *Modelling height-diameter curves for prediction*. *Canadian Journal of Forest Research*, 45(7): 826-837.
- Olofsson, P.; Foody, G.M.; Herold, M.; Stehman, S.V.; Woodcock, C.E., & Wulder, M.A., 2014. *Good practices for estimating area and assessing accuracy of land change*. *Remote Sensing of Environment*, 148, 42-57
- UNFCCC, 2009. *Decision 4/CP.15*. COP15: Report of the Conference of the Parties on its fifteenth session, held in Copenhagen from 7 to 19 December 2009. FCCC/CP/2009/11/Add.1. <https://unfccc.int/resource/docs/2009/cop15/eng/11a01.pdf#page=11>
- UNFCCC, 2011. *Decision 1/CP.16 Paragraph 71 c*. COP16: Report of the Conference of the Parties on its sixteenth session, held in Cancun from 29 November to 10 December 2010. FCCC/CP/2010/7/Add.1. <https://unfccc.int/resource/docs/2010/cop16/eng/07a01.pdf#page=12>
- UNFCCC, 2014. *Decision 11/CP.19*. COP19: Report of the Conference of the Parties on its nineteenth session, held in Warsaw from 11 to 23 November 2013. FCCC/CP/2013/10/Add.1. <https://unfccc.int/resource/docs/2013/cop19/eng/10a01.pdf#page=31>
- UNFCCC, 2015. *National forest monitoring system. REDD+ Web Platform*. UNFCCC <http://redd.unfccc.int/fact-sheets/national-forest-monitoring-system.html>. Accessed 1 May 2018.
- USGS, 2017. *Landsat Processing Details | Landsat Missions*. <https://landsat.usgs.gov/landsat-processing-details>. Accessed 19 September 2017.



## 6. Annexes

# Annex 1: Decision Process for Definition of Forest

## Background

In the past, there have been attempts to formalize the 'nationally accepted' definition of a forest that has as yet no formal and legal recognitions; the reason being that there are no such definitions specified in any national or provincial policies, legal instruments or strategies (Government of Pakistan 2015). With this backdrop, the process of formalizing definition of forest and endorsing it with national consensus was reinitiated under the project "Develop Forest Reference Emission Levels/Forest Reference Level and National Forest Monitoring System (NFMS)-Measurement and Reporting and Verification (MRV) System for REDD+". A key reference and tool<sup>32</sup> to support design decisions related to the definitions of forest, land use and land use change categories for the National Forest Monitoring System for Islamic Republic of Pakistan was prepared to facilitate the decision-making process.

The decision on the definition was made through a national consensus process with steps involving the federal entities, provincial forest departments, academic and research institutions and other related stakeholders. The process for this national consensus and endorsement involved:

- review of international best practices for allowable thresholds for minimum area, minimum crown cover and minimum height;
- determination of scope of activities;
- determination of Remote Sensing thresholds and approaches for detecting changes in land use, forest canopy cover/height/area;
- assessment of country situation regarding thresholds;
- assessment of cost and benefits of available options;
- finalizing forest definition;
- stakeholders' discussion and consensus; and
- national endorsement

The process of this key decision of Forest Definition was initiated during the Inception Workshop and the consensus building process continued through various stages.

Stages	Decision Process	Timeline
Stage 1	▪ Brainstorming Session on Land Cover and Activities	Inception Workshop (13-14 February 2017)
Stage 2	▪ Group Discussion on harmonization of existing land use classification with the IPCC Land Use Classes ▪ Propose consistent, comparable sub classes for forest types, applicable throughout the territory of Pakistan	Inception Workshop (13-14 February 2017)
Stage 3	▪ Key stakeholder consultation meetings at MOCC National REDD+ Office, Provincial Forest Departments, Pakistan Forest Institute and other stakeholders ▪ Key Informant Interviews Checklist on National Forest Inventory (NFI) ▪ Key Informant Interviews Checklist on Satellite Land Monitoring System (SLMS)	Visits to Provincial FDs, national and provincial stakeholders, academic institutions, other stakeholders (March-June 2017)

<sup>32</sup> The document is titled "Briefing Note for Definition of Forest Land and Other Land Use Classes and their Endorsement at the REDD+ Working Group Meeting on 7th-8th August 2017".

	<ul style="list-style-type: none"> <li>▪ Key Informant Interviews Checklist on Green House Gas inventories (GHG-I)</li> </ul>	
Stage 4	<ul style="list-style-type: none"> <li>▪ Preparation of Briefing Note for Definition of Forest Land and Other Land Use Classes as a decision support tool</li> <li>▪ Circulation and review of the briefing note to the provincial FDs and relevant stakeholders</li> </ul>	4-6 August 2017 (before the REDD+ WG Meeting)
Stage 5	<ul style="list-style-type: none"> <li>▪ Presentation and REDD+ Working Group Technical Meeting</li> <li>▪ Discussions amongst the key stakeholder groups</li> <li>▪ Consensus amongst the stakeholder groups</li> <li>▪ Decisions by the stakeholder groups</li> <li>▪ Ratification by all the stakeholders</li> <li>▪ Endorsement by the MOCC</li> <li>▪ Notifications to the provincial governments is in process</li> </ul>	Meeting of REDD+ Working Groups (7-8 August 2017)

### Decision on Forest Definition

The final Stage 5 comprised of the REDD+ Working Group discussions, consensus building, decision on the definition and ratification by the REDD+ Working group. The key decision was made on the 'National Definition of the Forest' with these parameters and their rationale:

Parameter/Threshold	Description/Rationale
Minimum area of 0.5 ha	<ul style="list-style-type: none"> <li>• Historic data (remote sensing and inventory) for reference years available</li> <li>• Institutional capacity required for processing and analysis of remote sensing and inventory data exists</li> <li>• Cost effectiveness due to freely available remote sensing data (e.g. Landsat, Sentinel 2)</li> <li>• Easy to estimate and make comparisons using consistent method</li> <li>• Small sized land holdings in hilly regions can be included</li> </ul>
Minimum crown cover of 10%	<ul style="list-style-type: none"> <li>• Pakistan has low forest cover</li> <li>• Scrub forest and shrubland to be included</li> </ul>
Minimum height of 2 m	<ul style="list-style-type: none"> <li>• Vegetation of dry and arid climate to be included</li> <li>• Growth rate of forest is low in Pakistan</li> <li>• Scrub forest to be included</li> </ul>

- Besides these threshold parameters, inclusion of Plantations was also discussed and decided,

The definition was endorsed by all the provincial representatives and was agreed upon and officially notified as the National Forest Definition by the Government of Pakistan/Ministry of Climate Change on the date of **14 September 2017**. The notified forest definition is as follows.



**TO BE PUBLISHED IN THE NEXT ISSUE  
OF THE GAZETTE OF PAKISTAN**

Government of Pakistan  
Ministry of Climate Change  
\*\*\*\*\*

Islamabad the 14th September, 2017

**NOTIFICATION**

**No.1-1/2016/NRC/WG.** In pursuance of the recommendations of the National Working Group meeting held on August 07-08, 2017 and as endorsed by authorized representatives of the Provinces, G-B, AJK and FATA, the national definition of forest is hereby notified as under:

***"A minimum area of land of 0.5 ha with a tree crown cover of more than 10% comprising trees with the potential to reach a minimum height of 2 meters"***

*This will also include existing irrigated plantations as well as areas that have already been defined as forests in respective legal documents and expected to meet the required thresholds as defined in the national forest definition for Pakistan.*

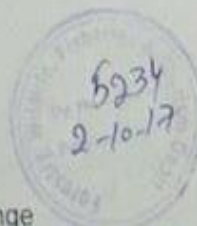
02. This issues with the approval of Secretary Ministry of Climate Change.

(Aurangzeb Ashraf Awan)  
Assistant Inspector General Forests

The Manager,  
Printing Corporation of Pakistan Press,  
University Road,  
**Karachi.**

Copy to:

- ✓ Provincial Forest Departments
- 2. To Secretary, Ministry of Climate Change



## Annex 2: Sources of information for the drivers of deforestation and forest degradation events

Drivers of Deforestation and Forest Degradation	Source for information to detect the degradation and deforestation event and its extent	Verification body
Infrastructure Development	Forest Department Roads Department / Highway Local Government Department Department of Physical Planning and Housing Land use planning and development department PWD (Hydel Projects) LGRD Forest Conservation Committees Revenue Department (Irrigation, Agriculture Departments & NGOs) National/Provincial mapping agencies ("urban unit") and academic institutions Political administration Police Department (FATA Levies)	Revenue Authority  Land use planning and development department  Irrigation Department  Highway department  Local government  Forest Department
Settlements Habitation Urban / Shanty town expansion	Forest Department (field staff) Revenue Department Municipal Corporation PDA/LDA (Provincial Development Authorities) Local community Researchers National Mapping Agency	Town Planning Department Revenue Department Municipal corporations / committees / local govt. Forest Department
Mining	Forest Department (field staff/guard; illegal cases) Revenue department (illegal cases) Mining Department (requests NOC from Forest Department in legal cases) Small Industries Department Community members Geological Survey of Pakistan	Town Planning Department Mining Department Forest Department
Forest fires	Forest Department (Forest Guards) Local community (member) Police reports Meteorological Department Political administration	Police and disaster management staff Forest officer
Commercial agriculture expansion	Local community Forest Department (field staffs)	Local Administration Agricultural Department Forest Officer (GIS, forest history files/records)

	Development authorities (concerned, prior request in legal cases) (Land) Revenue Department Town and City Management Agriculture Department Crop Reporting Services	
Subsistence agriculture expansion	Local community Forest staff (Forest Department) Agriculture Department (Land) Revenue Department (Patwari) Crop Reporting Services	Local Administration Agricultural Department Forest Officer (Compartment history files) Revenue Department Police (reports)
Small-scale agricultural practice expansion	Local community Forest staff (Forest Department, (compartment / forest history files / police reports) Agriculture Department (Field Officer) (Land) Revenue Department (Patwari) Town and City Management, Provincial Mapping Unit	Local Administration Agricultural Department Forest Department Revenue Department
Encroachment	Forest Department (staff/guards) Local Community Revenue Department Police Journalists Area (Provincial) Development Agencies	Local development authorities Forest Department (Demarcation unit of FD; GIS) Revenue Department
Forest clearing for security purposes	Forest Department (field staff) Revenue Department Community Army-Police (sometimes) Security Agencies Govt. officials	Local development authorities Forest Department (ground verification) Revenue Department
Unsustainable timber and fuelwood extraction	Forest Department (field staff/guards) AKLASC (Azad Kashmir Logging and Saw Mills Corporation, timber organizations) Local community (member) Police or another law enforcing agency (FATA levies) NGOs Media  (In case of firewood extraction most people as beneficiaries silent)	Local development authorities Forest Department (forest office, damage reports ground verification, timber assessment reports, working plans /management plan data) PFI Local community
Fish pond establishment	Fishery Departments Forest Department (field staff) Local community Irrigation Department WAPDA	Local development authorities Forest Department (Staff/Officer)



Water-logging activities	Agriculture Department Land Department Forest Department (field staff) Local Farming communities Soil Survey of Pakistan National Mapping Agency Irrigation Department	Local development authorities Forest Officer (forest inventory reports)
Free / uncontrolled livestock grazing Overgrazing and browsing	Forest Department / Forest Guards (local staffs) Livestock Department Revenue Department Local Community (members)	Any local person Forest Officer (Surveys conducted by Forest Department and livestock, damage and other reports)
Land lease / hand over	Govt Dept/Provincial Development Agencies Municipal Department Forest Department (field staff/officer) Revenue Department Small industries Tourism Dept. Mining Department	Revenue Department
Hotel industry development	Forest Department (field staff) Tourism Department Local community PPH TDCP Local development agencies	Beneficiary Forestry Officer (spot verification/GIS map/forest records, impact assessment reports, notes)
Unscientific forestry operations and management	Forest Department (Forest Officer) Community Media Local administration	Forest Department (Staff, assessment, evaluation, offence case reports, department data / management plans) PFI
Atmospheric pollution	Govt. depts EPA Environmental Department Meteorological Department Transport authority Small industries department Media	Forest Staff Met Department
Freshwater pollution	Govt Dept Agriculture Department Fisheries Department (Flood &) Irrigation Department Municipal Department EPA Forest Department Health Department	Forest Department Environmental Municipal Irrigation EPA Public Health
Floods	Flood Relief Department Flood Warning Centres Forest Department WAPDA PDMA+NDMA IRSA Irrigation Department Media Owners/users GBOMA	WAPDA Meteorological Department

	Pakistan Meteorological Department FATA Disaster Authority (FOMA)	
Forest diseases, and pest attacks	Forest Department (DFO, field staff) PFI Pest Control Department Community	Forest Department (Staff/Officer) PFI
Landslide impact areas	Local community Forest Department (field staff) UNDP NDMA Geological Survey of Pakistan FOMA	Road Maintenance bodies Forest Department (Forest Officer) Survey of Pakistan AJK Land Use Planning RFO Communication & Works Department
Heavy snowfall impact area	Local community & members Forest Department (Staff) NDMA, PDMA Pakistan Meteorological Department	Climate / Met. department National News Forest Officer
Earthquake impact area	Local community & members Forest Department (Staff) Revenue Department Disaster Management Authority NDMA, PDMA (GBDMA) Meteorological Department Geological Department Political administration	National Disaster Management Department / PDMA Forest Officer
Run off/erosion impact area	Local community & members Forest Department (Staff) WAPDA NDMA Pak. Meteorological Department Irrigation Department Soil Conservation Department	Forest Officer
Drought impact area	Local District Administration NDMA+PDMA Disaster Management Authority Locals/community Agriculture/Forest Department (Staff; Rangeland officer) Revenue Department Pak. Meteorological Department	Forest Officer Met Department
Oceanic intrusion and tsunami impact area	Locals / Forest Staff Pak. Meteorological Department Pak. Navy. Coastal Development Authority / Coastal Management Department Marine Fisheries Department Sea Port Authorities Disaster Management Authority Revenue Authority WMO WAPDA	All national depts.



